

D-M-E X-, AX- and T-Series Mold Bases

A WIDE SELECTION OF D-M-E
STANDARD STRIPPER PLATE, AX-
AND T-SERIES MOLD BASES AVAILABLE
IN DOZENS OF STANDARD SIZES



X-, AX- and T-Series Mold Bases

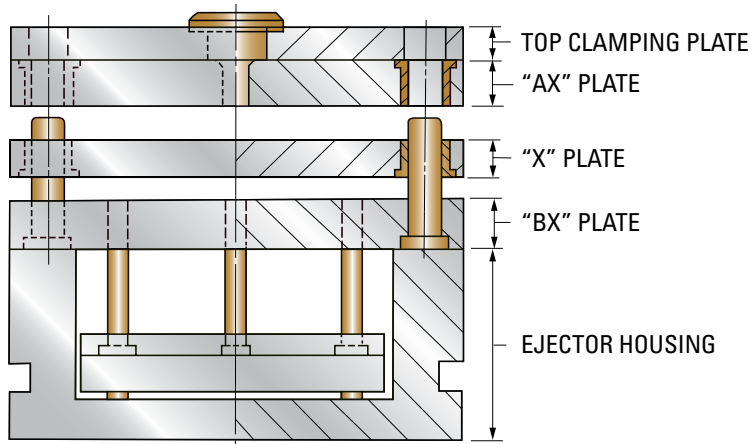
Table of Contents

<i>Stripper Plate Series Mold Bases.....</i>	<i>172</i>	<i>9-7/8 T-Series Mold Bases</i>	<i>185</i>
<i>AX- and T-Series Mold Bases.....</i>	<i>173</i>	<i>10-7/8 T-Series Mold Bases.....</i>	<i>186</i>
<i>7-7/8 and 9-7/8 Stripper Plate Mold Bases.....</i>	<i>174</i>	<i>11-7/8 T-Series Mold Bases.....</i>	<i>187</i>
<i>10-7/8 Stripper Plate Mold Bases.....</i>	<i>175</i>	<i>13-3/8 T-Series Mold Bases</i>	<i>188</i>
<i>11-7/8 Stripper Plate Mold Bases</i>	<i>176</i>	<i>14-7/8 T-Series Mold Bases</i>	<i>189</i>
<i>13-3/8 Stripper Plate Mold Bases.....</i>	<i>177</i>	<i>15-7/8 T-Series Mold Bases</i>	<i>190</i>
<i>14-7/8 Stripper Plate Mold Bases.....</i>	<i>178</i>	<i>16-1/2 T-Series Mold Bases</i>	<i>191</i>
<i>15-7/8 and 16-1/2 Stripper Plate Mold Bases</i>	<i>179</i>	<i>17-7/8 T-Series Mold Bases.....</i>	<i>192</i>
<i>17-7/8 Stripper Plate Mold Bases.....</i>	<i>180</i>	<i>19-1/2 T-Series Mold Bases</i>	<i>193</i>
<i>19-1/2 and 23-3/4 Stripper Plate Mold Bases</i>	<i>181</i>	<i>23-3/4 T-Series Mold Bases</i>	<i>194</i>
<i>Multiple Stripper Plate Mold Bases.....</i>	<i>182</i>	<i>Ball Bushings for Floating Plates</i>	<i>195</i>
<i>AX-Series Mold Bases.....</i>	<i>183</i>	<i>3-Plate Extension Bushing</i>	<i>196</i>
<i>7-7/8 T-Series 3-Plate Mold Base</i>	<i>184</i>		

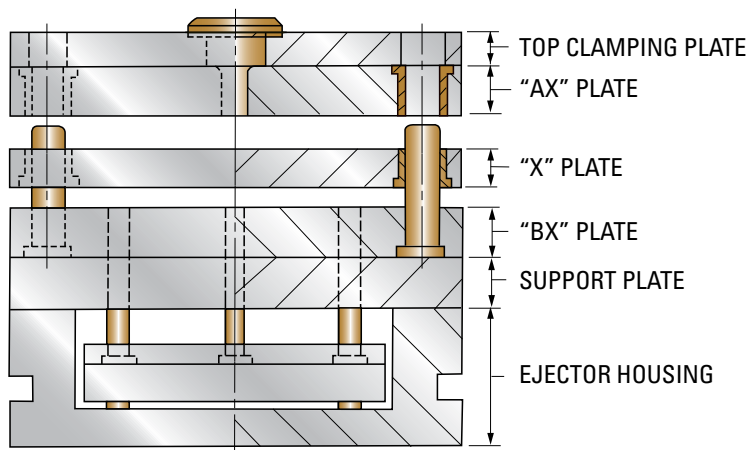
Stripper Plate Series Mold Base Features

D-M-E Standard Stripper ("X" Series) Mold Bases are available with either the 5- or 6-plate construction. The location of the return pins, leader pins, screws and dowels are identical to the Standard "A" Series Mold Bases. Specifications are listed for every D-M-E Standard size from 7.875 × 7.875 to 23.75 × 35.5.

5 PLATE SERIES



6 PLATE SERIES

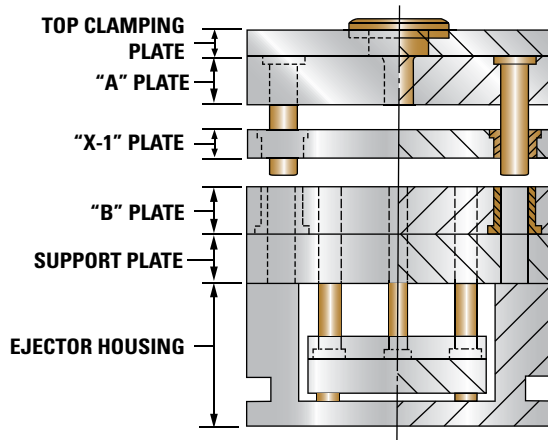


AX- and T-Series Mold Base Features

“AX” Series Mold Bases

A D-M-E Standard “AX” Series Mold Base is basically an “A” Series type mold base with a floating plate (“X-1” plate) added between the cavity plates. This type assembly is used when it is desirable to have the floating plate remain with the upper half of the assembly.

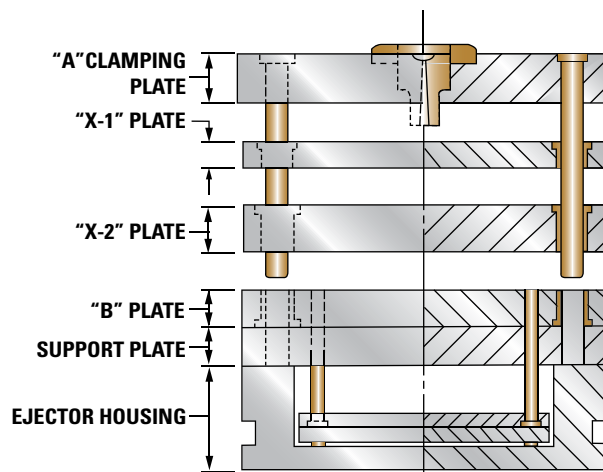
“AX” SERIES



“T” Series Mold Bases

D-M-E Standard “T” Series Mold Bases are available in 42 standard sizes, from 7.875 × 7.875 to 23.75 × 35.5. They are used for top runner molds that require two floating plates (“X-1” – runner stripper plate, “X-2” – cavity plate) to remain with the upper or stationary half of the assembly.

“T” SERIES



7⁷/₈" and 9⁷/₈" Stripper Plate Mold Bases

NO. 1 & NO. 2 STEEL ASSEMBLIES

All plates above ejector housing are No. 1 or No. 2 Steel, respectively.

NO. 3 STEEL ASSEMBLIES

"AX", "X", and "BX" plates are No. 3 Steel. Top clamping and support plates are No. 2 Steel.

NO. 7 STEEL ASSEMBLIES

Any or all plates available as requested.

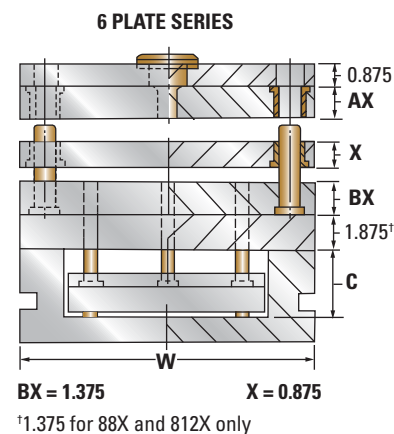
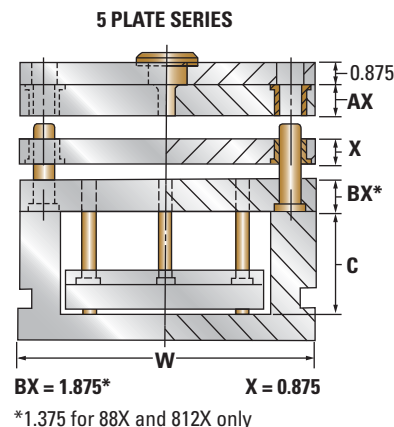
W	L	TCP	AX	C	5 PLATE		6 PLATE	
					ITEM NUMBER	NET WT.	ITEM NUMBER	NET WT.
7.875	7.875	0.875	0.875	2.5	88X-5-7	111	88X-6-7	136
			1.375	2.5	88X-5-13	120	88X-6-13	145
			1.875	2.5	88X-5-17	129	88X-6-17	154
			2.375	2.5	88X-5-23	138	88X-6-23	163
	11.875	0.875	0.875	2.5	812X-5-7	174	812X-6-7	211
			1.375	3	812X-5-13	187	812X-6-13	224
			1.875	3.5	812X-5-17	200	812X-6-17	237
			2.375	3.5	812X-5-23	214	812X-6-23	251
	8	0.875	0.875	2.5	108X-5-7	158	108X-6-7	189
			1.375	3	108X-5-13	173	108X-6-13	204
			1.875	3.5	108X-5-17	187	108X-6-17	218
			2.375	3.5	108X-5-23	198	108X-6-23	229
2.875			4	108X-5-27	213	108X-6-27	244	
9.875	11.875	0.875	0.875	2.5	1012X-5-7	235	1012X-6-7	281
			1.375	3	1012X-5-13	256	1012X-6-13	302
			1.875	3.5	1012X-5-17	277	1012X-6-17	323
			2.375	3.5	1012X-5-23	294	1012X-6-23	340
			2.875	4	1012X-5-27	316	1012X-6-27	362
	16	0.875	0.875	2.5	1016X-5-7	316	1016X-6-7	378
			1.375	3	1016X-5-13	345	1016X-6-13	407
			1.875	3.5	1016X-5-17	374	1016X-6-17	436
			2.375	3.5	1016X-5-23	396	1016X-6-23	458
			2.875	4	1016X-5-27	425	1016X-6-27	487
			3.375	4.5	1016X-5-33	454	1016X-6-33	516
			20	0.875	0.875	2.5	1020X-5-7	395
1.375	3	1020X-5-13			431	1020X-6-13	508	
1.875	3.5	1020X-5-17			467	1020X-6-17	544	
2.375	3.5	1020X-5-23			495	1020X-6-23	572	
2.875	4	1020X-5-27			531	1020X-6-27	608	
			3.375	4.5	1020X-5-33	567	1020X-6-33	644

NOTE: Mold bases listed above may be ordered with "X", "AX", and "BX" plate thicknesses other than those shown in chart. Prices on request.

WHEN ORDERING, PLEASE SPECIFY:

- Quantity & Item Number
- No. 1, No. 2, No. 3, or No. 7 Steel
- Locating Ring Item Number
- E, O and R Dimensions
- Method of Shipment
- 1.375 Top Clamping Plate if desired

Refer to corresponding size "A" Series Mold Base for detail dimensions



10⁷/₈" Stripper Plate Mold Bases

NO. 1 & NO. 2 STEEL ASSEMBLIES

All plates above ejector housing are No. 1 or No. 2 Steel, respectively.

NO. 3 STEEL ASSEMBLIES

"AX", "X", and "BX" plates are No. 3 Steel. Top clamping and support plates are No. 2 Steel.

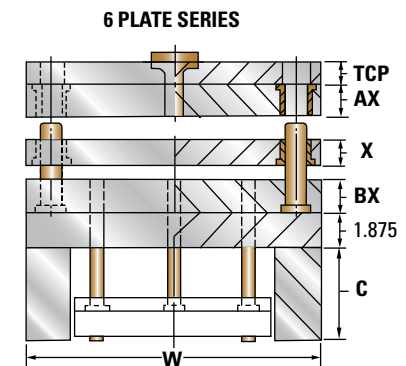
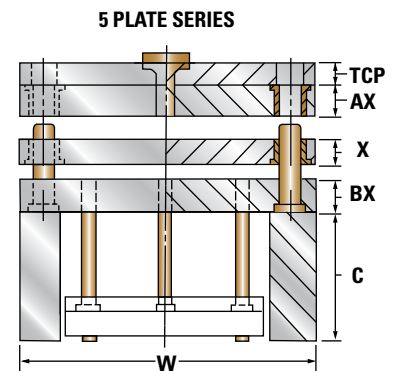
NO. 7 STEEL ASSEMBLIES

Any or all plates available as requested.

W	L	TCP	AX	C	5 PLATE BX = 1.875 X = 0.875		6 PLATE BX = 1.375 X = 0.875	
					ITEM NUMBER	NET WT.	ITEM NUMBER	NET WT.
10.875	12	0.875	0.875	2.5	1112X-5-7	262	1112X-6-7	313
			1.375	3	1112X-5-13	286	1112X-6-13	337
			1.875	3.5	1112X-5-17	310	1112X-6-17	361
			2.375	3.5	1112X-5-23	329	1112X-6-23	380
			2.875	4	1112X-5-27	353	1112X-6-27	404
			3.375	4.5	1112X-5-33	377	1112X-6-33	428
	14	0.875	0.875	2.5	1114X-5-7	306	1114X-6-7	366
			1.375	3	1114X-5-13	334	1114X-6-13	394
			1.875	3.5	1114X-5-17	362	1114X-6-17	422
			2.375	3.5	1114X-5-23	384	1114X-6-23	444
			2.875	4	1114X-5-27	412	1114X-6-27	472
			3.375	4.5	1114X-5-33	440	1114X-6-33	500
	18	0.875	0.875	2.5	1118X-5-7	393	1118X-6-7	470
			1.375	3	1118X-5-13	429	1118X-6-13	506
			1.875	3.5	1118X-5-17	466	1118X-6-17	543
			2.375	3.5	1118X-5-23	493	1118X-6-23	570
			2.875	4	1118X-5-27	530	1118X-6-27	607
			3.375	4.5	1118X-5-33	566	1118X-6-33	643
	23.5	0.875	0.875	2.5	1123X-5-7	513	1123X-6-7	613
			1.375	3	1123X-5-13	560	1123X-6-13	660
			1.875	3.5	1123X-5-17	608	1123X-6-17	708
			2.375	3.5	1123X-5-23	644	1123X-6-23	744
			2.875	4	1123X-5-27	691	1123X-6-27	791
			3.375	4.5	1123X-5-33	739	1123X-6-33	839

NOTE: Mold bases listed above may be ordered with "X", "AX", and "BX" plate thicknesses other than those shown in chart. Prices on request.

Refer to corresponding size "A" Series Mold Base for detail dimensions



WHEN ORDERING, PLEASE SPECIFY:

- Quantity & Item Number
- No. 1, No. 2, No. 3, or No. 7 Steel
- Locating Ring Item Number
- E, O and R Dimensions
- Method of Shipment
- 1.375 Top Clamping Plate if desired

1 1/8" Stripper Plate Mold Bases

NO. 1 & NO. 2 STEEL ASSEMBLIES

All plates above ejector housing are No. 1 or No. 2 Steel, respectively.

NO. 3 STEEL ASSEMBLIES

"AX", "X", and "BX" plates are No. 3 Steel.

Top clamping and support plates are No. 2 Steel.

NO. 7 STEEL ASSEMBLIES

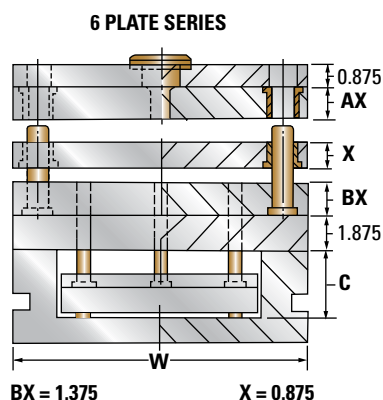
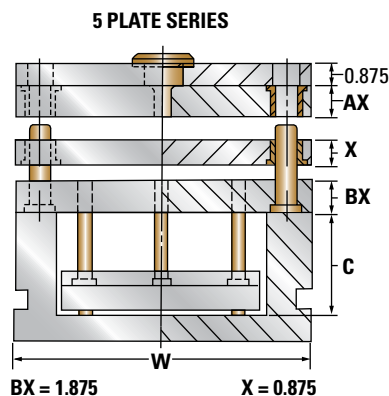
Any or all plates available as requested.

X-, AX- and T-Series Mold Bases | 1 1/8" Stripper Plate Mold Bases

W	L	AX	C	5 PLATE		6 PLATE	
				ITEM NUMBER	NET WT.	ITEM NUMBER	NET WT.
11.875	12	1.375	3	1212X-5-13	315	1212X-6-13	371
		1.875	3.5	1212X-5-17	341	1212X-6-17	397
		2.375	3.5	1212X-5-23	361	1212X-6-23	417
		2.875	4	1212X-5-27	387	1212X-6-27	443
		3.375	4	1212X-5-33	407	1212X-6-33	463
		3.875	4.5	1212X-5-37	433	1212X-6-37	489
	15	1.375	3	1215X-5-13	393	1215X-6-13	463
		1.875	3.5	1215X-5-17	426	1215X-6-17	496
		2.375	3.5	1215X-5-23	451	1215X-6-23	521
		2.875	4	1215X-5-27	483	1215X-6-27	553
		3.375	4	1215X-5-33	509	1215X-6-33	579
		3.875	4.5	1215X-5-37	541	1215X-6-37	611
	20	1.375	3	1220X-5-13	525	1220X-6-13	618
		1.875	3.5	1220X-5-17	568	1220X-6-17	661
		2.375	3.5	1220X-5-23	601	1220X-6-23	694
		2.875	4	1220X-5-27	645	1220X-6-27	738
		3.375	4	1220X-5-33	678	1220X-6-33	771
		3.875	4.5	1220X-5-37	721	1220X-6-37	814
	23.5	1.375	3	1223X-5-13	616	1223X-6-13	725
		1.875	3.5	1223X-5-17	667	1223X-6-17	776
		2.375	3.5	1223X-5-23	706	1223X-6-23	815
		2.875	4	1223X-5-27	757	1223X-6-27	866
		3.375	4	1223X-5-33	797	1223X-6-33	906
		3.875	4.5	1223X-5-37	848	1223X-6-37	957

NOTE: Mold bases listed above may be ordered with "X", "AX", and "BX" plate thicknesses other than those shown in chart. Prices on request.

Refer to corresponding size "A" Series Mold Base for detail dimensions.



WHEN ORDERING, PLEASE SPECIFY:

- Quantity & Item Number
- No. 1, No. 2, No. 3, or No. 7 Steel
- Locating Ring Item Number
- E, O and R Dimensions
- Method of Shipment
- 1.375 Top Clamping Plate if desired

13³/₈" Stripper Plate Mold Bases

NO. 1 & NO. 2 STEEL ASSEMBLIES

All plates above ejector housing are No. 1 or No. 2 Steel, respectively.

NO. 3 STEEL ASSEMBLIES

"AX", "X", and "BX" plates are No. 3 Steel.

Top clamping and support plates are No. 2 Steel.

NO. 7 STEEL ASSEMBLIES

Any or all plates available as requested.

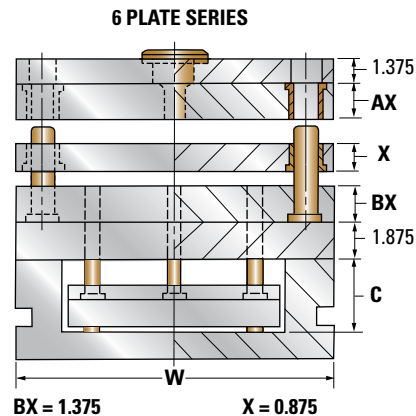
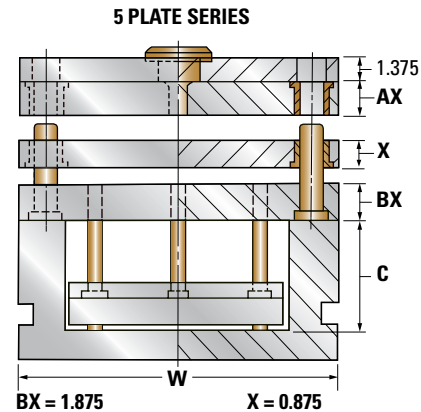
W	L	AX	C	5 PLATE		6 PLATE	
				ITEM NUMBER	NET WT.	ITEM NUMBER	NET WT.
13.375	15	1.375	3	1315X-5-13	477	1315X-6-13	556
		1.875	3.5	1315X-5-17	513	1315X-6-17	592
		2.375	3.5	1315X-5-23	542	1315X-6-23	621
		2.875	4	1315X-5-27	578	1315X-6-27	657
		3.375	4	1315X-5-33	607	1315X-6-33	686
		3.875	4.5	1315X-5-37	643	1315X-6-37	722
	18	1.375	3	1318X-5-13	572	1318X-6-13	666
		1.875	3.5	1318X-5-17	616	1318X-6-17	710
		2.375	3.5	1318X-5-23	650	1318X-6-23	744
		2.875	4	1318X-5-27	694	1318X-6-27	788
		3.375	4	1318X-5-33	728	1318X-6-33	822
		3.875	4.5	1318X-5-37	771	1318X-6-37	865
	20.75	1.375	3	1321X-5-13	660	1321X-6-13	769
		1.875	3.5	1321X-5-17	710	1321X-6-17	819
		2.375	3.5	1321X-5-23	749	1321X-6-23	858
		2.875	4	1321X-5-27	800	1321X-6-27	909
		3.375	4	1321X-5-33	839	1321X-6-33	948
		3.875	4.5	1321X-5-37	889	1321X-6-37	998
	23.5	1.375	3	1323X-5-13	747	1323X-6-13	870
		1.875	3.5	1323X-5-17	804	1323X-6-17	927
		2.375	3.5	1323X-5-23	849	1323X-6-23	972
		2.875	4	1323X-5-27	906	1323X-6-27	1029
		3.375	4	1323X-5-33	950	1323X-6-33	1073
		3.875	4.5	1323X-5-37	1007	1323X-6-37	1130
	26	1.375	3	1326X-5-13	826	1326X-6-13	962
		1.875	3.5	1326X-5-17	889	1326X-6-17	1025
		2.375	3.5	1326X-5-23	939	1326X-6-23	1075
		2.875	4	1326X-5-27	1002	1326X-6-27	1138
		3.375	4	1326X-5-33	1051	1326X-6-33	1187
		3.875	4.5	1326X-5-37	1114	1326X-6-37	1250
29.5	1.375	3	1329X-5-13	938	1329X-6-13	1092	
	1.875	3.5	1329X-5-17	1009	1329X-6-17	1163	
	2.375	3.5	1329X-5-23	1065	1329X-6-23	1219	
	2.875	4	1329X-5-27	1137	1329X-6-27	1291	
	3.375	4	1329X-5-33	1192	1329X-6-33	1346	
	3.875	4.5	1329X-5-37	1264	1329X-6-37	1418	

NOTE: Mold bases listed above may be ordered with "X", "AX", and "BX" plate thicknesses other than those shown in chart. Prices on request.

WHEN ORDERING, PLEASE SPECIFY:

- Quantity & Item Number
- No. 1, No. 2, No. 3, or No. 7 Steel
- Locating Ring Item Number
- E, O and R Dimensions
- Method of Shipment

Refer to corresponding size "A" Series Mold Base for detail dimensions.



14⁷/₈" Stripper Plate Mold Bases

NO. 1 & NO. 2 STEEL ASSEMBLIES

All plates above ejector housing are No. 1 or No. 2 Steel, respectively.

NO. 3 STEEL ASSEMBLIES

"AX", "X", and "BX" plates are No. 3 Steel.

Top clamping and support plates are No. 2 Steel.

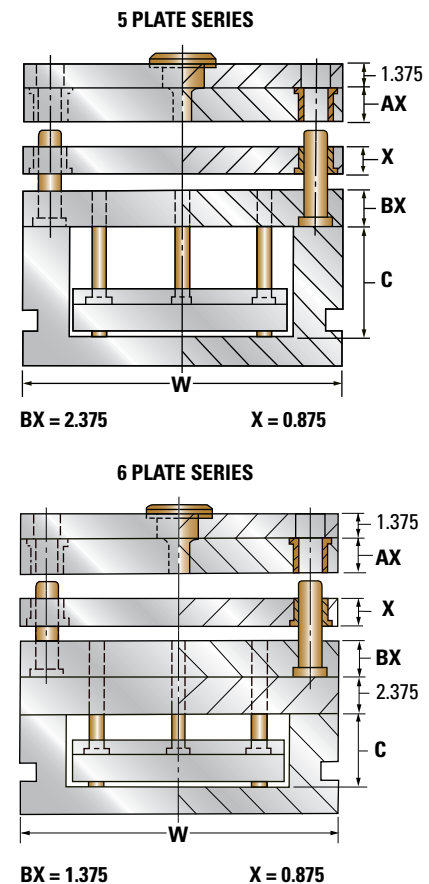
NO. 7 STEEL ASSEMBLIES

Any or all plates available as requested.

W	L	AX	C	5 PLATE		6 PLATE	
				ITEM NUMBER	NET WT.	ITEM NUMBER	NET WT.
14.875	17.875	1.375	3	1518X-5-13	668	1518X-6-13	772
		1.875	3.5	1518X-5-17	715	1518X-6-17	819
		2.375	3.5	1518X-5-23	752	1518X-6-23	856
		2.875	4	1518X-5-27	800	1518X-6-27	904
		3.375	4	1518X-5-33	837	1518X-6-33	941
		3.875	4.5	1518X-5-37	885	1518X-6-37	989
	23.75	1.375	3	1524X-5-13	887	1524X-6-13	1025
		1.875	3.5	1524X-5-17	950	1524X-6-17	1088
		2.375	3.5	1524X-5-23	1000	1524X-6-23	1138
		2.875	4	1524X-5-27	1063	1524X-6-27	1201
		3.375	4	1524X-5-33	1112	1524X-6-33	1250
		3.875	4.5	1524X-5-37	1175	1524X-6-37	1313
	29.5	1.375	3	1529X-5-13	1102	1529X-6-13	1273
		1.875	3.5	1529X-5-17	1180	1529X-6-17	1351
		2.375	3.5	1529X-5-23	1242	1529X-6-23	1413
2.875		4	1529X-5-27	1320	1529X-6-27	1491	
3.375		4	1529X-5-33	1382	1529X-6-33	1553	
		3.875	4.5	1529X-5-37	1460	1529X-6-37	1631

NOTE: Mold bases listed above may be ordered with "X", "AX", and "BX" plate thicknesses other than those shown in chart. Prices on request.

Refer to corresponding size "A" Series Mold Base for detail dimensions.



WHEN ORDERING, PLEASE SPECIFY:

- Quantity & Item Number
- No. 1, No. 2, No. 3, or No. 7 Steel
- Locating Ring Item Number
- E, O and R Dimensions
- Method of Shipment

15⁷/₈" and 16¹/₂" Stripper Plate Mold Bases

NO. 1 & NO. 2 STEEL ASSEMBLIES

All plates above ejector housing are No. 1 or No. 2 Steel, respectively.

NO. 3 STEEL ASSEMBLIES

"AX", "X", and "BX" plates are No. 3 Steel. Top clamping and support plates are No. 2 Steel.

NO. 7 STEEL ASSEMBLIES

Any or all plates available as requested.

5 PLATE SERIES



6 PLATE SERIES



W	L	AX	C	5 PLATE		6 PLATE		
				ITEM NUMBER	NET WT.	ITEM NUMBER	NET WT.	
15.875	16	1.375	3	1616X-5-13	637	1616X-6-13	736	
		1.875	3.5	1616X-5-17	682	1616X-6-17	781	
		2.375	3.5	1616X-5-23	717	1616X-6-23	816	
		2.875	4	1616X-5-27	762	1616X-6-27	861	
		3.375	4	1616X-5-33	798	1616X-6-33	897	
		3.875	4.5	1616X-5-37	843	1616X-6-37	942	
	20	1.375	3	1620X-5-13	796	1620X-6-13	920	
		1.875	3.5	1620X-5-17	852	1620X-6-17	976	
		2.375	3.5	1620X-5-23	896	1620X-6-23	1020	
		2.875	4	1620X-5-27	952	1620X-6-27	1076	
		3.375	4	1620X-5-33	997	1620X-6-33	1121	
		3.875	4.5	1620X-5-37	1053	1620X-6-37	1177	
	23.5	1.375	3	1623X-5-13	935	1623X-6-13	1081	
		1.875	3.5	1623X-5-17	1001	1623X-6-17	1147	
		2.375	3.5	1623X-5-23	1053	1623X-6-23	1199	
		2.875	4	1623X-5-27	1119	1623X-6-27	1265	
		3.375	4	1623X-5-33	1171	1623X-6-33	1317	
		3.875	4.5	1623X-5-37	1237	1623X-6-37	1383	
	26	1.375	3	1626X-5-13	1034	1626X-6-13	1195	
		1.875	3.5	1626X-5-17	1107	1626X-6-17	1268	
		2.375	3.5	1626X-5-23	1165	1626X-6-23	1326	
		2.875	4	1626X-5-27	1238	1626X-6-27	1399	
		3.375	4	1626X-5-33	1296	1626X-6-33	1457	
		3.875	4.5	1626X-5-37	1368	1626X-6-37	1529	
	29.5	1.375	3	1629X-5-13	1174	1629X-6-13	1357	
		1.875	3.5	1629X-5-17	1256	1629X-6-17	1439	
		2.375	3.5	1629X-5-23	1322	1629X-6-23	1505	
		2.875	4	1629X-5-27	1404	1629X-6-27	1587	
		3.375	4	1629X-5-33	1470	1629X-6-33	1653	
		3.875	4.5	1629X-5-37	1553	1629X-6-37	1736	
	35.5	1.375	3	1635X-5-13	1412	1635X-6-13	1632	
		1.875	3.5	1635X-5-17	1511	1635X-6-17	1731	
		2.375	3.5	1635X-5-23	1591	1635X-6-23	1811	
		2.875	4	1635X-5-27	1690	1635X-6-27	1910	
		3.375	4	1635X-5-33	1769	1635X-6-33	1989	
		3.875	4.5	1635X-5-37	1868	1635X-6-37	2088	
	16.5	23.75	1.375	3	1724X-5-13	981	1724X-6-13	1134
			1.875	3.5	1724X-5-17	1050	1724X-6-17	1203
			2.375	3.5	1724X-5-23	1105	1724X-6-23	1258
			2.875	4	1724X-5-27	1173	1724X-6-27	1326
			3.375	4	1724X-5-33	1229	1724X-6-33	1382
			3.875	4.5	1724X-5-37	1297	1724X-6-37	1450
		29.5	1.375	3	1729X-5-13	1219	1729X-6-13	1409
			1.875	3.5	1729X-5-17	1304	1729X-6-17	1494
			2.375	3.5	1729X-5-23	1372	1729X-6-23	1562
			2.875	4	1729X-5-27	1457	1729X-6-27	1647
			3.375	4	1729X-5-33	1526	1729X-6-33	1716
			3.875	4.5	1729X-5-37	1611	1729X-6-37	1801

NOTE: Mold bases listed above may be ordered with "X", "AX", and "BX" plate thicknesses other than those shown in chart. Prices on request.

WHEN ORDERING, PLEASE SPECIFY:

- 1. Quantity & Item Number
- 2. No. 1, No. 2, No. 3, or No. 7 Steel
- 3. Locating Ring Item Number
- 4. E, O and R Dimensions
- 5. Method of Shipment

17⁷/₈" Stripper Plate Mold Bases

NO. 1 & NO. 2 STEEL ASSEMBLIES

All plates above ejector housing are No. 1 or No. 2 Steel, respectively.

NO. 3 STEEL ASSEMBLIES

"AX", "X", and "BX" plates are No. 3 Steel.

Top clamping and support plates are No. 2 Steel.

NO. 7 STEEL ASSEMBLIES

Any or all plates available as requested.

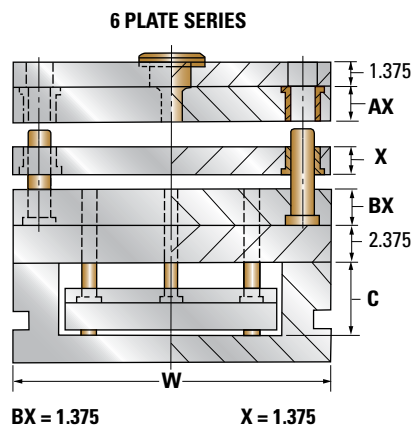
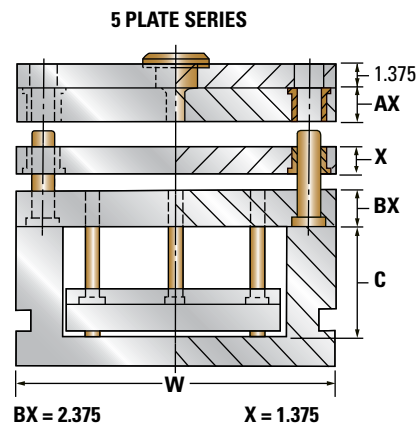
W	L	AX	C	5 PLATE		6 PLATE	
				ITEM NUMBER	NET WT.	ITEM NUMBER	NET WT.
17.875	18	1.375	3	1818X-5-13	850	1818X-6-13	976
		1.875	3.5	1818X-5-17	905	1818X-6-17	1031
		2.375	3.5	1818X-5-23	951	1818X-6-23	1077
		2.875	4	1818X-5-27	1006	1818X-6-27	1132
		3.375	4	1818X-5-33	1051	1818X-6-33	1177
		3.875	4.5	1818X-5-37	1107	1818X-6-37	1233
	20	1.375	3	1820X-5-13	944	1820X-6-13	1084
		1.875	3.5	1820X-5-17	1006	1820X-6-17	1146
		2.375	3.5	1820X-5-23	1056	1820X-6-23	1196
		2.875	4	1820X-5-27	1118	1820X-6-27	1258
		3.375	4	1820X-5-33	1168	1820X-6-33	1308
		3.875	4.5	1820X-5-37	1230	1820X-6-37	1370
	23.5	1.375	3	1823X-5-13	1109	1823X-6-13	1273
		1.875	3.5	1823X-5-17	1182	1823X-6-17	1346
		2.375	3.5	1823X-5-23	1241	1823X-6-23	1405
		2.875	4	1823X-5-27	1313	1823X-6-27	1477
		3.375	4	1823X-5-33	1372	1823X-6-33	1536
		3.875	4.5	1823X-5-37	1445	1823X-6-37	1609
	26	1.375	3	1826X-5-13	1227	1826X-6-13	1409
		1.875	3.5	1826X-5-17	1307	1826X-6-17	1489
		2.375	3.5	1826X-5-23	1373	1826X-6-23	1555
		2.875	4	1826X-5-27	1453	1826X-6-27	1635
		3.375	4	1826X-5-33	1518	1826X-6-33	1700
		3.875	4.5	1826X-5-37	1598	1826X-6-37	1780
	29.5	1.375	3	1829X-5-13	1392	1829X-6-13	1598
		1.875	3.5	1829X-5-17	1483	1829X-6-17	1689
		2.375	3.5	1829X-5-23	1558	1829X-6-23	1764
		2.875	4	1829X-5-27	1648	1829X-6-27	1854
		3.375	4	1829X-5-33	1723	1829X-6-33	1929
		3.875	4.5	1829X-5-37	1813	1829X-6-37	2019
	35.5	1.375	3	1835X-5-13	1676	1835X-6-13	1924
		1.875	3.5	1835X-5-17	1785	1835X-6-17	2033
		2.375	3.5	1835X-5-23	1874	1835X-6-23	2122
		2.875	4	1835X-5-27	1983	1835X-6-27	2231
		3.375	4	1835X-5-33	2073	1835X-6-33	2321
		3.875	4.5	1835X-5-37	2182	1835X-6-37	2430

NOTE: Mold bases listed above may be ordered with "X", "AX", and "BX" plate thicknesses other than those shown in chart. Prices on request.

WHEN ORDERING, PLEASE SPECIFY:

- Quantity & Item Number
- No. 1, No. 2, No. 3, or No. 7 Steel
- Locating Ring Item Number
- E, O and R Dimensions
- Method of Shipment

Refer to corresponding size "A" Series Mold Base for detail dimensions.



19¹/₂" and 23³/₄" Stripper Plate Mold Bases

NO. 1 & NO. 2 STEEL ASSEMBLIES

All plates above ejector housing are No. 1 or No. 2 Steel, respectively.

NO. 3 STEEL ASSEMBLIES

"AX", "X", and "BX" plates are No. 3 Steel.

Top clamping and support plates are No. 2 Steel.

NO. 7 STEEL ASSEMBLIES

Any or all plates available as requested.

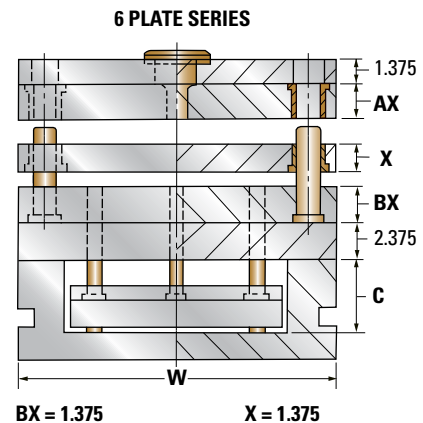
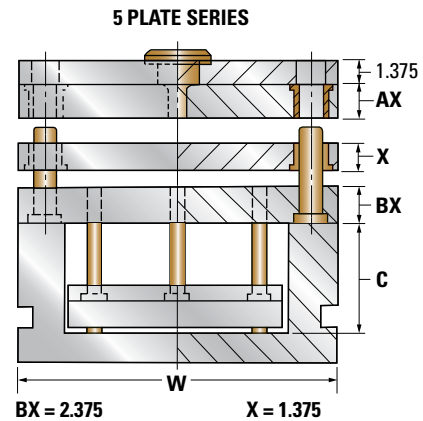
W	L	AX	C	5 PLATE		6 PLATE	
				ITEM NUMBER	NET WT.	ITEM NUMBER	NET WT.
19.5	23.75	1.375	3	1924X-5-13	1221	1924X-6-13	1402
		1.875	3.5	1924X-5-17	1300	1924X-6-17	1481
		2.375	3.5	1924X-5-23	1365	1924X-6-23	1546
		2.875	4	1924X-5-27	1443	1924X-6-27	1624
		3.375	4	1924X-5-33	1509	1924X-6-33	1690
	29.5	3.875	4.5	1924X-5-37	1587	1924X-6-37	1768
		1.375	3	1929X-5-13	1516	1929X-6-13	1741
		1.875	3.5	1929X-5-17	1614	1929X-6-17	1839
		2.375	3.5	1929X-5-23	1695	1929X-6-23	1920
		2.875	4	1929X-5-27	1793	1929X-6-27	2018
	35.5	3.375	4	1929X-5-33	1874	1929X-6-33	2099
		3.875	4.5	1929X-5-37	1971	1929X-6-37	2196
		1.375	3	1935X-5-13	1825	1935X-6-13	2095
		1.875	3.5	1935X-5-17	1942	1935X-6-17	2212
		2.375	3.5	1935X-5-23	2040	1935X-6-23	2310
23.75	23.75	2.875	4	1935X-5-27	2157	1935X-6-27	2427
		3.375	4	1935X-5-33	2255	1935X-6-33	2525
		3.875	4.5	1935X-5-37	2372	1935X-6-37	2642
		1.375	3	2424X-5-13	1562	2424X-6-13	1782
		1.875	3.5	2424X-5-17	1655	2424X-6-17	1875
	29.5	2.375	3.5	2424X-5-23	1734	2424X-6-23	1954
		2.875	4	2424X-5-27	1827	2424X-6-27	2047
		3.375	4	2424X-5-33	1907	2424X-6-33	2127
		3.875	4.5	2424X-5-37	2000	2424X-6-37	2220
		1.375	3	2429X-5-13	1940	2429X-6-13	2213
	35.5	1.875	3.5	2429X-5-17	2055	2429X-6-17	2328
		2.375	3.5	2429X-5-23	2154	2429X-6-23	2427
		2.875	4	2429X-5-27	2269	2429X-6-27	2542
		3.375	4	2429X-5-33	2368	2429X-6-33	2641
		3.875	4.5	2429X-5-37	2483	2429X-6-37	2756
35.5	1.375	3	2435X-5-13	2334	2435X-6-13	2663	
	1.875	3.5	2435X-5-17	2473	2435X-6-17	2802	
	2.375	3.5	2435X-5-23	2592	2435X-6-23	2921	
	2.875	4	2435X-5-27	2730	2435X-6-27	3059	
	3.375	4	2435X-5-33	2850	2435X-6-33	3179	
		3.875	4.5	2435X-5-37	2988	2435X-6-37	3317

NOTE: Mold bases listed above may be ordered with "X", "AX", and "BX" plate thicknesses other than those shown in chart. Prices on request.

WHEN ORDERING, PLEASE SPECIFY:

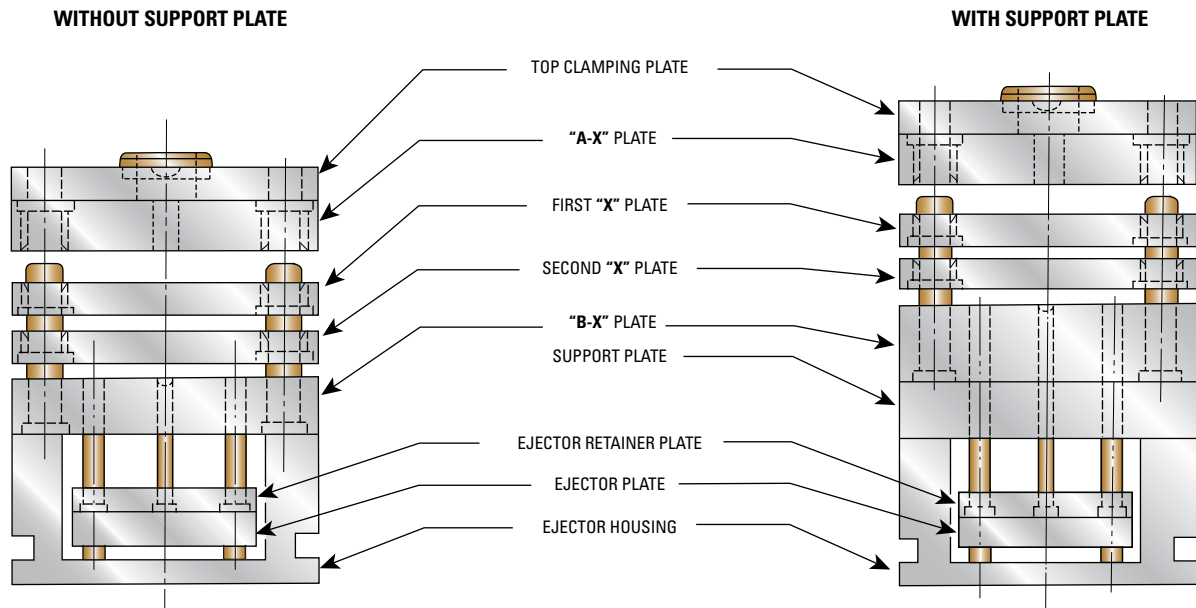
- Quantity & Item Number
- No. 1, No. 2, No. 3, or No. 7 Steel
- Locating Ring Item Number
- E, O and R Dimensions
- Method of Shipment

Refer to corresponding size "A" Series Mold Base for detail dimensions.

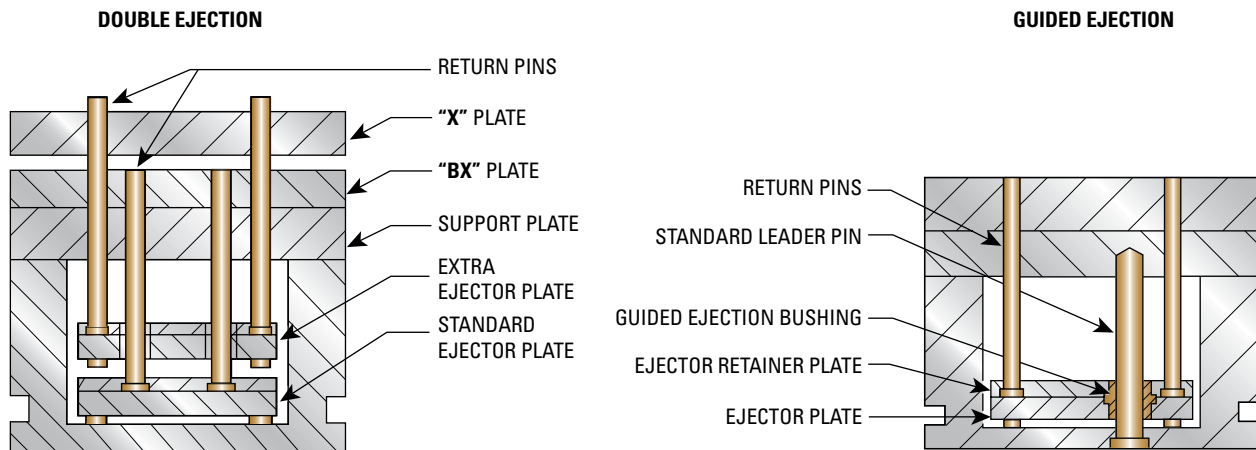


Multiple Stripper Plate Mold Bases

Multiple Stripper Plate Mold Bases consist of a 5 or 6 plate "X" Series Mold Base with one or more floating plates added to the assembly. The assembly "without the support plate" has the same construction as the 5 Plate "X" Series. When this type of assembly is required please refer to the plate designations listed below. Prices quoted on request.



VARIATIONS IN EJECTOR ASSEMBLY



Double ejection is sometimes required when using multiple stripper plate mold assemblies. Prices quoted on request.

When an exceptionally long stroke is required, or when ejector pin diameters are extremely small a guided ejector assembly can give additional rigidity.

AX-Series Mold Bases

NO. 1 OR NO. 2 STEEL ASSEMBLIES

All plates above ejector housing are No. 1 or No. 2 Steel, respectively.

NO. 3 STEEL ASSEMBLIES

"A", "X-1", and "B" plates are No. 3 Steel.

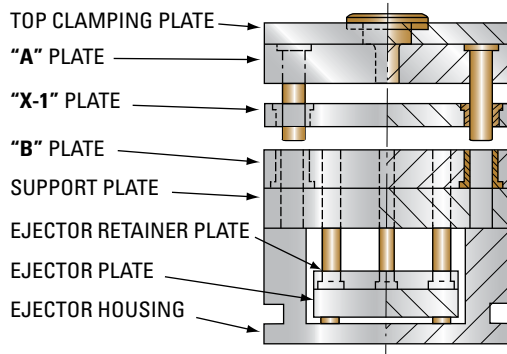
Top clamping and support plates are No. 2 Steel.

NO. 7 STEEL ASSEMBLIES

Any or all plates available as requested.



"AX" Series Assembly



MOLD BASE SIZE WIDTH (W)	TOP CLAMPING PLATE THICKNESS
7.875 to 11.875	0.875
13.375 to 23.75	1.375

"X-1" PLATE THICKNESSES AVAILABLE:

0.875, 1.375, 1.875, 2.375, 2.875, 3.375, 4.875, 5.875

A D-M-E Standard "AX" Series Mold Base is basically an "A" series type mold base with a floating plate ("X-1" plate) added between the "A" and "B" Plates. This type assembly is used where it is desirable to have the floating plate remain with the upper half of the assembly.

INSTRUCTIONS FOR ORDERING:

When ordering "AX" Series Mold Bases, refer to the corresponding size "A" Series Mold Base for detailed dimensions.

To create a Item number, add an "X" after the "A" in Item number of corresponding size A-Series mold base, and follow with thickness of the (1) A-Plate, (2) X-1 Plate and (3) B-Plate.

Example: 1012AX-13-17-23

STANDARD MOLD BASE SIZE		ITEM NUMBER PREFIX
W	L	
7.875	7.875	88AX
	11.875	812AX
9.875	8	108AX
	11.875	1012AX
	16	1016AX
	20	1020AX
	23.5	1123AX
10.875	12	1112AX
	14	1114AX
	18	1118AX
	23.5	1123AX
11.875	12	1212AX
	15	1215AX
	20	1220AX
	23.5	1223AX
	29.5	1329AX
13.375	15	1315AX
	18	1318AX
	20.75	1321AX
	23.5	1323AX
	26	1326AX
14.875	17.875	1518AX
	23.75	1524AX
	29.5	1529AX

STANDARD MOLD BASE SIZE		ITEM NUMBER PREFIX
W	L	
15.875	16	1616AX
	20	1620AX
	23.5	1623AX
	26	1626AX
	29.5	1629AX
16.5	35.5	1635AX
	23.75	1724AX
	29.5	1729AX
17.875	18	1818AX
	20	1820AX
	23.5	1823AX
	26	1826AX
	29.5	1829AX
19.5	35.5	1835AX
	23.75	1924AX
	29.5	1929AX
23.75	35.5	1935AX
	23.75	2424AX
	29.5	2429AX
	35.5	2435AX

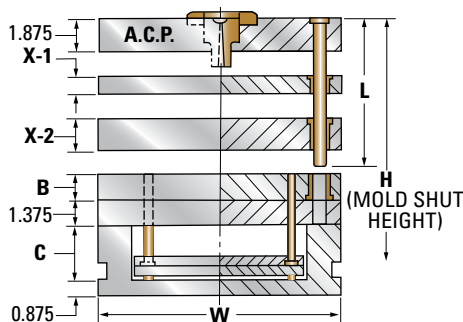
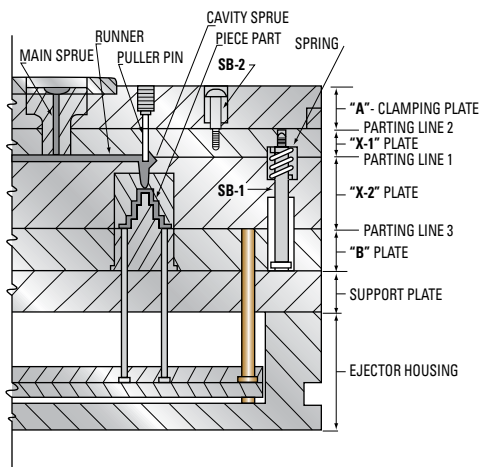
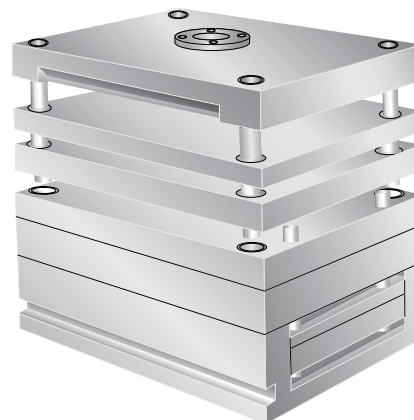
WHEN ORDERING, PLEASE SPECIFY:

- Quantity & Item Number
- No. 1, No. 2, No. 3, or No. 7 Steel
- X-1 Plate Thickness
- Locating Ring Item Number
- E, O and R Dimensions
- Method of Shipment
- 1.375 Top Clamping Plate if desired

7⁷/₈" T-Series (3-Plate) Mold Bases

A typical 3-plate top runner mold operates as follows: The mold opens first at Parting Line 1 (spring loaded). The runner and cavity sprues are pulled from the cavities in the "X-2" Plate and held against the "X-1" Plate by undercut puller pins.

As the mold continues to open ("X-2" Plate moving forward), stripper bolts SB-1 pull the "X-1" Plate forward (at the end of the "X-2" Plate movement). The "X-1" Plate travel is determined by stripper bolts SB-2. The travel of the "X-1" Plate (breaking at Parting Line 2) strips the entire runner system from the puller pins, breaks the main sprue (held to a minimum length), and allows the runner to drop free. Mold opening at Parting Line 3 then takes place for piece part ejection.



For detailed dimensions, see corresponding size "A" Series Mold Base

X-, AX- and T-Series Mold Bases | 7⁷/₈" T-Series (3-Plate) Mold Bases

X-2	X-1 = 0.875			7.875 x 7.875	
	B	C	H	ITEM NUMBER	NET WT.
1.375	0.875	2.5	9.75	88T-13-7	153
	1.375	2.5	10.25	88T-13-13	162
1.875	1.875	2.5	10.75	88T-13-17	171
	0.875	2.5	10.25	88T-17-7	162
1.875	1.375	2.5	10.75	88T-17-13	171
	1.875	2.5	11.25	88T-17-17	180
2.375	1.375	2.5	11.25	88T-23-13	180
	1.875	2.5	11.75	88T-23-17	188
2.375	2.375	3	12.75	88T-23-23	200
	1.375	3	12.25	88T-27-13	191
2.875	1.875	3.5	13.25	88T-27-17	203
	2.375	3.5	13.75	88T-27-23	212
3.375	1.875	3.5	13.75	88T-33-17	212
	2.375	4	14.75	88T-33-23	223
3.375	2.875	4	15.25	88T-33-27	232
	1.875	3.5	14.25	88T-37-17	220
3.875	2.375	4	15.25	88T-37-23	232
	2.875	4	15.75	88T-37-27	241
4.875	2.375	4	16.25	88T-47-23	250
	2.875	4	16.75	88T-47-27	258
	3.375	4.5	17.75	88T-47-33	270

X-2	X-1 = 0.875			7.875 x 11.875	
	B	C	H	ITEM NUMBER	NET WT.
1.375	0.875	2.5	9.75	812T-13-7	237
	1.375	3	10.75	812T-13-13	254
1.875	1.875	3	11.25	812T-13-17	268
	0.875	2.5	10.25	812T-17-7	250
1.875	1.375	3	11.25	812T-17-13	268
	1.875	3.5	12.25	812T-17-17	285
2.375	1.375	3	11.75	812T-23-13	281
	1.875	3.5	12.75	812T-23-17	298
2.375	2.375	3.5	13.25	812T-23-23	312
	1.375	3	12.25	812T-27-13	294
2.875	1.875	3.5	13.25	812T-27-17	312
	2.375	3.5	13.75	812T-27-23	325
3.375	1.875	3.5	13.75	812T-33-17	325
	2.375	4	14.75	812T-33-23	342
3.375	2.875	4	15.25	812T-33-27	355
	1.875	3.5	14.25	812T-37-17	338
3.875	2.375	4	15.25	812T-37-23	355
	2.875	4	15.75	812T-37-27	369
4.875	2.375	4	16.25	812T-47-23	382
	2.875	4	16.75	812T-47-27	395
	3.375	4.5	17.75	812T-47-33	413

NOTE: Stripper bolts, puller pins and spring shown are not included. When gating directly into the cavity from a top runner, the 3-plate "T" Series assembly may be used. It incorporates an additional runner stripper plate ("X-1") to facilitate automatic removal of the runner from the mold.

The "X-1" and "X-2" Plates have standard shoulder bushings and ride on standard leader pins. (When heavy "X-2" Plates are required, moldmaker may want to specify larger diameter leader pins and have them relocated. Contact customer service for a quotation to your specifications). The "X-1" Plate is supplied without a center hole. A standard sprue bushing long enough to extend through the "X-1" Plate is provided to allow the moldmaker to finish the sprue bushing hole as desired, or to install a recessed bushing to give the shortest main sprue length for minimum stripper plate movement.

Detailed dimensions for the "T" Series are identical to corresponding size "A" Series Mold Bases. Center sprue puller pin and pin holes as well as the socket head cap screws in the "A" — Clamping Plate are omitted since they are not required.

9 7/8" T-Series Mold Bases

X-1 = 0.875				9.875 x 8"	
X-2	B	C	H	ITEM NUMBER	NET WT.
1.375	0.875	2.5	10.25	108T-13-7	211
	1.375	2.5	10.75	108T-13-13	223
	1.875	3	11.75	108T-13-17	237
1.875	0.875	2.5	10.75	108T-17-7	223
	1.375	3	11.75	108T-17-13	237
	1.875	3.5	12.75	108T-17-17	251
2.375	1.375	3	12.25	108T-23-13	248
	1.875	3.5	13.25	108T-23-17	263
	2.375	3.5	13.75	108T-23-23	274
2.875	1.375	3	12.75	108T-27-13	259
	1.875	3.5	13.75	108T-27-17	274
	2.375	3.5	14.25	108T-27-23	285
3.375	1.875	3.5	14.25	108T-33-17	285
	2.375	4	15.25	108T-33-23	299
	2.875	4	15.75	108T-33-27	311
3.875	1.875	3.5	14.75	108T-37-17	296
	2.375	4	15.75	108T-37-23	311
	2.875	4	16.25	108T-37-27	322
4.875	2.375	4	16.75	108T-47-23	333
	2.875	4	17.25	108T-47-27	344
	3.375	4.5	18.25	108T-47-33	359

X-1 = 0.875				9.875 x 16"	
X-2	B	C	H	ITEM NUMBER	NET WT.
1.375	0.875	2.5	10.25	1016T-13-7	422
	1.375	3	11.25	1016T-13-13	451
	1.875	3	11.75	1016T-13-17	473
1.875	0.875	2.5	10.75	1016T-17-7	444
	1.375	3	11.75	1016T-17-13	473
	1.875	3.5	12.75	1016T-17-17	502
2.375	1.375	3	12.25	1016T-23-13	496
	1.875	3.5	13.25	1016T-23-17	525
	2.375	3.5	13.75	1016T-23-23	547
2.875	1.375	3	12.75	1016T-27-13	518
	1.875	3.5	13.75	1016T-27-17	547
	2.375	3.5	14.25	1016T-27-23	569
3.375	1.875	3.5	14.25	1016T-33-17	569
	2.375	4	15.25	1016T-33-23	598
	2.875	4	15.75	1016T-33-27	621
3.875	1.875	3.5	14.75	1016T-37-17	592
	2.375	4	15.75	1016T-37-23	621
	2.875	4	16.25	1016T-37-27	643
4.875	2.375	4	16.75	1016T-47-23	665
	2.875	4	17.25	1016T-47-27	688
	3.375	4.5	18.25	1016T-47-33	717

X-1 = 0.875				9.875 x 11.875	
X-2	B	C	H	ITEM NUMBER	NET WT.
1.375	0.875	2.5	10.25	1012T-13-7	313
	1.375	3	11.25	1012T-13-13	335
	1.875	3	11.75	1012T-13-17	351
1.875	0.875	2.5	10.75	1012T-17-7	330
	1.375	3	11.75	1012T-17-13	352
	1.875	3.5	12.75	1012T-17-17	373
2.375	1.375	3	12.25	1012T-23-13	368
	1.875	3.5	13.25	1012T-23-17	390
	2.375	3.5	13.75	1012T-23-23	406
2.875	1.375	3	12.75	1012T-27-13	385
	1.875	3.5	13.75	1012T-27-17	406
	2.375	3.5	14.25	1012T-27-23	423
3.375	1.875	3.5	14.25	1012T-33-17	423
	2.375	4	15.25	1012T-33-23	444
	2.875	4	15.75	1012T-33-27	461
3.875	1.875	3.5	14.75	1012T-37-17	439
	2.375	4	15.75	1012T-37-23	461
	2.875	4	16.25	1012T-37-27	477
4.875	2.375	4	16.75	1012T-47-23	494
	2.875	4	17.25	1012T-47-27	511
	3.375	4.5	18.25	1012T-47-33	532

X-1 = 0.875				9.875 x 20"	
X-2	B	C	H	ITEM NUMBER	NET WT.
1.375	0.875	2.5	10.25	1020T-13-7	528
	1.375	3	11.25	1020T-13-13	564
	1.875	3	11.75	1020T-13-17	592
1.875	0.875	2.5	10.75	1020T-17-7	556
	1.375	3	11.75	1020T-17-13	592
	1.875	3.5	12.75	1020T-17-17	628
2.375	1.375	3	12.25	1020T-23-13	620
	1.875	3.5	13.25	1020T-23-17	656
	2.375	3.5	13.75	1020T-23-23	684
2.875	1.375	3	12.75	1020T-27-13	648
	1.875	3.5	13.75	1020T-27-17	684
	2.375	3.5	14.25	1020T-27-23	712
3.375	1.875	3.5	14.25	1020T-33-17	712
	2.375	4	15.25	1020T-33-23	748
	2.875	4	15.75	1020T-33-27	776
3.875	1.875	3.5	14.75	1020T-37-17	740
	2.375	4	15.75	1020T-37-23	776
	2.875	4	16.25	1020T-37-27	804
4.875	2.375	4	16.75	1020T-47-23	832
	2.875	4	17.25	1020T-47-27	860
	3.375	4.5	18.25	1020T-47-33	896

NO. 1 OR NO. 2 STEEL ASSEMBLIES

All plates above ejector housing are No. 1 or No. 2 Steel, respectively.

NO. 3 STEEL ASSEMBLIES

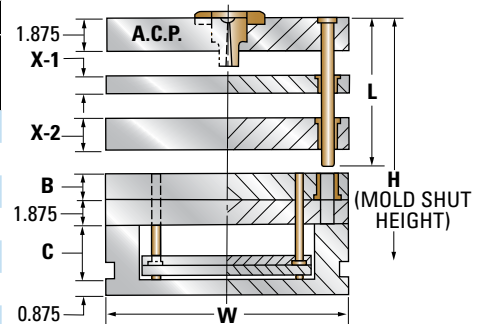
"X-1", "X-2" and "B" Plates are No. 3 Steel.

"A" -Clamping and Support Plates are No. 2 Steel.

NO. 7 STEEL ASSEMBLIES

Any or all plates available as requested.

NOTE: For 3-Plate Extension Bushings, see page 195.



For detailed dimensions, see corresponding size "A" Series Mold Bases.

WHEN ORDERING, PLEASE SPECIFY:

- Quantity & Item Number
- No. 1, No. 2, No. 3, or No. 7 Steel
- Locating Ring Item Number
- E, O and R Dimensions
- L Dimension (Leader Pin Length)
- Method of Shipment

10⁷/₈" T-Series Mold Bases

NO. 1 OR NO. 2 STEEL ASSEMBLIES

All plates above ejector housing are No. 1 or No. 2 Steel, respectively.

NO. 3 STEEL ASSEMBLIES

"X-1", "X-2" and "B" Plates are No. 3 Steel.
"A" - Clamping and Support Plates are No. 2 Steel.

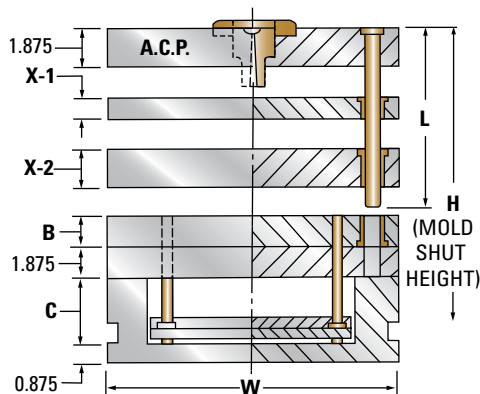
NO. 7 STEEL ASSEMBLIES

Any or all plates available as requested.

NOTE: For 3-Plate Extension Bushings, see page 195.

X-1 = 0.875				10.875 x 12"	
X-2	B	C	H	ITEM NUMBER	NET WT.
1.875	0.875	2.5	10.75	1112T-17-7	368
	1.375	3	11.75	1112T-17-13	393
	1.875	3.5	12.75	1112T-17-17	417
2.375	1.375	3	12.25	1112T-23-13	411
	1.875	3.5	13.25	1112T-23-17	435
	2.375	3.5	13.75	1112T-23-23	454
2.875	1.375	3	12.75	1112T-27-13	430
	1.875	3.5	13.75	1112T-27-17	454
	2.375	3.5	14.25	1112T-27-23	472
3.375	1.875	3.5	14.25	1112T-33-17	472
	2.375	4	15.25	1112T-33-23	497
	2.875	4	15.75	1112T-33-27	515
3.875	1.875	3.5	14.75	1112T-37-17	491
	2.375	4	15.75	1112T-37-23	515
	2.875	4	16.25	1112T-37-27	534
4.875	2.375	4	16.75	1112T-47-23	552
	2.875	4	17.25	1112T-47-27	570
	3.375	4.5	18.25	1112T-47-33	595
5.875	2.875	4	18.25	1112T-57-27	607
	3.875	4.5	19.75	1112T-57-37	650
	4.875	4.5	20.75	1112T-57-47	687

X-1 = 0.875				10.875 x 18"	
X-2	B	C	H	ITEM NUMBER	NET WT.
1.875	0.875	2.5	10.75	1118T-17-7	552
	1.375	3	11.75	1118T-17-13	589
	1.875	3.5	12.75	1118T-17-17	625
2.375	1.375	3	12.25	1118T-23-13	616
	1.875	3.5	13.25	1118T-23-17	653
	2.375	3.5	13.75	1118T-23-23	680
2.875	1.375	3	12.75	1118T-27-13	644
	1.875	3.5	13.75	1118T-27-17	680
	2.375	3.5	14.25	1118T-27-23	708
3.375	1.875	3.5	14.25	1118T-33-17	708
	2.375	4	15.25	1118T-33-23	745
	2.875	4	15.75	1118T-33-27	772
3.875	1.875	3.5	14.75	1118T-37-17	736
	2.375	4	15.75	1118T-37-23	772
	2.875	4	16.25	1118T-37-27	800
4.875	2.375	4	16.75	1118T-47-23	828
	2.875	4	17.25	1118T-47-27	855
	3.375	4.5	18.25	1118T-47-33	892
5.875	2.875	4	18.25	1118T-57-27	911
	3.875	4.5	19.75	1118T-57-37	975
	4.875	4.5	20.75	1118T-57-47	1030



For detailed dimensions, see corresponding size "A" Series Mold Bases.

WHEN ORDERING, PLEASE SPECIFY:

- Quantity & Item Number
- No. 1, No. 2, No. 3 or No. 7 Steel
- Locating Ring Item Number
- E, O and R Dimensions
- L Dimension (Leader Pin Length)
- Method of Shipment

X-1 = 0.875				10.875 x 14"	
X-2	B	C	H	ITEM NUMBER	NET WT.
1.875	0.875	2.5	10.75	1114T-17-7	430
	1.375	3	11.75	1114T-17-13	458
	1.875	3.5	12.75	1114T-17-17	486
2.375	1.375	3	12.25	1114T-23-13	480
	1.875	3.5	13.25	1114T-23-17	508
	2.375	3.5	13.75	1114T-23-23	529
2.875	1.375	3	12.75	1114T-27-13	501
	1.875	3.5	13.75	1114T-27-17	529
	2.375	3.5	14.25	1114T-27-23	551
3.375	1.875	3.5	14.25	1114T-33-17	551
	2.375	4	15.25	1114T-33-23	579
	2.875	4	15.75	1114T-33-27	601
3.875	1.875	3.5	14.75	1114T-37-17	573
	2.375	4	15.75	1114T-37-23	601
	2.875	4	16.25	1114T-37-27	622
4.875	2.375	4	16.75	1114T-47-23	644
	2.875	4	17.25	1114T-47-27	665
	3.375	4.5	18.25	1114T-47-33	694
5.875	2.875	4	18.25	1114T-57-27	709
	3.875	4.5	19.75	1114T-57-37	758
	4.875	4.5	20.75	1114T-57-47	802

X-1 = 1.375				10.875 x 23.5"	
X-2	B	C	H	ITEM NUMBER	NET WT.
1.875	1.375	3	12.25	1123T-17-13	805
	1.875	3.5	13.25	1123T-17-17	852
	2.375	3.5	13.75	1123T-17-23	888
2.375	1.375	3	12.75	1123T-23-13	841
	1.875	3.5	13.75	1123T-23-17	888
	2.375	3.5	14.25	1123T-23-23	924
2.875	1.375	3	13.25	1123T-27-13	877
	1.875	3.5	14.25	1123T-27-17	924
	2.375	3.5	14.75	1123T-27-23	961
3.375	1.875	3.5	14.75	1123T-33-17	961
	2.375	4	15.75	1123T-33-23	1008
	2.875	4	16.25	1123T-33-27	1044
3.875	1.875	3.5	15.25	1123T-37-17	997
	2.375	4	16.25	1123T-37-23	1044
	2.875	4	16.75	1123T-37-27	1080
4.875	2.375	4	17.25	1123T-47-23	1117
	2.875	4	17.75	1123T-47-27	1153
	3.375	4.5	18.75	1123T-47-33	1200
5.875	2.875	4	18.75	1123T-57-27	1225
	3.875	4.5	20.25	1123T-57-37	1309
	4.875	4.5	21.25	1123T-57-47	1381

1 1/8" T-Series Mold Bases

X-1 = 0.875				11.875 x 12"	
X-2	B	C	H	ITEM NUMBER	NET WT.
1.875	0.875	3	11.25	1212T-17-7	411
	1.375	3	11.75	1212T-17-13	431
	1.875	3	12.25	1212T-17-17	451
2.375	1.375	3.5	12.75	1212T-23-13	457
	1.875	3.5	13.25	1212T-23-17	477
	2.375	3.5	13.75	1212T-23-23	497
2.875	1.375	3.5	13.25	1212T-27-13	477
	1.875	3.5	13.75	1212T-27-17	497
	2.375	3.5	14.25	1212T-27-23	518
3.375	1.875	3.5	14.25	1212T-33-17	518
	2.375	4	15.25	1212T-33-23	543
	2.875	4	15.75	1212T-33-27	564
3.875	1.875	4	15.25	1212T-37-17	543
	2.375	4.5	16.25	1212T-37-23	569
	2.875	4.5	16.75	1212T-37-27	590
4.875	2.375	4.5	17.25	1212T-47-23	610
	2.875	4.5	17.75	1212T-47-27	630
	3.375	4.5	18.25	1212T-47-33	650
5.875	2.875	4.5	18.75	1212T-57-27	670
	3.875	4.5	19.75	1212T-57-37	711
	4.875	4.5	20.75	1212T-57-47	751

X-1 = 0.875				11.875 x 20"	
X-2	B	C	H	ITEM NUMBER	NET WT.
1.875	0.875	3	11.25	1220T-17-7	684
	1.375	3	11.75	1220T-17-13	718
	1.875	3	12.25	1220T-17-17	752
2.375	1.375	3.5	12.75	1220T-23-13	761
	1.875	3.5	13.25	1220T-23-17	795
	2.375	3.5	13.75	1220T-23-23	828
2.875	1.375	3.5	13.25	1220T-27-13	795
	1.875	3.5	13.75	1220T-27-17	828
	2.375	3.5	14.25	1220T-27-23	862
3.375	1.875	3.5	14.25	1220T-33-17	862
	2.375	4	15.25	1220T-33-23	905
	2.875	4	15.75	1220T-33-27	939
3.875	1.875	4	15.25	1220T-37-17	905
	2.375	4.5	16.25	1220T-37-23	949
	2.875	4.5	16.75	1220T-37-27	982
4.875	2.375	4.5	17.25	1220T-47-23	1016
	2.875	4.5	17.75	1220T-47-27	1049
	3.375	4.5	18.25	1220T-47-33	1083
5.875	2.875	4.5	18.75	1220T-57-27	1117
	3.875	4.5	19.75	1220T-57-37	1184
	4.875	4.5	20.75	1220T-57-47	1251

NO. 1 OR NO. 2 STEEL ASSEMBLIES

All plates above ejector housing are No. 1 or No. 2 Steel, respectively.

NO. 3 STEEL ASSEMBLIES

"X-1", "X-2" and "B" Plates are No. 3 Steel.

"A"-Clamping and Support Plates are No. 2 Steel.

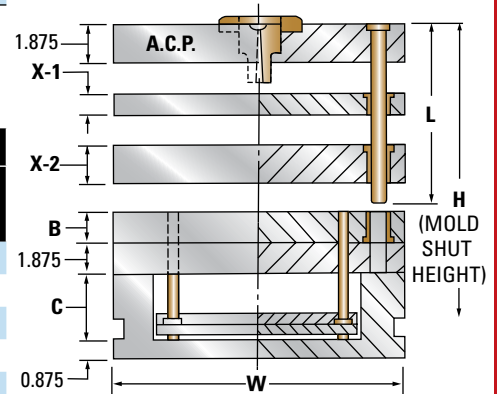
NO. 7 STEEL ASSEMBLIES

Any or all plates available as requested.

NOTE: For 3-Plate Extension Bushings, see page 195.

X-1 = 0.875				11.875 x 15"	
X-2	B	C	H	ITEM NUMBER	NET WT.
1.875	0.875	3	11.25	1215T-17-7	513
	1.375	3	11.75	1215T-17-13	539
	1.875	3	12.25	1215T-17-17	564
2.375	1.375	3.5	12.75	1215T-23-13	571
	1.875	3.5	13.25	1215T-23-17	596
	2.375	3.5	13.75	1215T-23-23	621
2.875	1.375	3.5	13.25	1215T-27-13	596
	1.875	3.5	13.75	1215T-27-17	621
	2.375	3.5	14.25	1215T-27-23	647
3.375	1.875	3.5	14.25	1215T-33-17	647
	2.375	4	15.25	1215T-33-23	679
	2.875	4	15.75	1215T-33-27	704
3.875	1.875	4	15.25	1215T-37-17	679
	2.375	4.5	16.25	1215T-37-23	711
	2.875	4.5	16.75	1215T-37-27	737
4.875	2.375	4.5	17.25	1215T-47-23	762
	2.875	4.5	17.75	1215T-47-27	787
	3.375	4.5	18.25	1215T-47-33	812
5.875	2.875	4.5	18.75	1215T-57-27	839
	3.875	4.5	19.75	1215T-57-37	888
	4.875	4.5	20.75	1215T-57-47	939

X-1 = 1.375				11.875 x 23.5"	
X-2	B	C	H	ITEM NUMBER	NET WT.
1.875	1.375	3	12.25	1223T-17-13	883
	1.875	3	12.75	1223T-17-17	923
	2.375	3.5	13.75	1223T-17-23	973
2.375	1.375	3.5	13.25	1223T-23-13	934
	1.875	3.5	13.75	1223T-23-17	973
	2.375	3.5	14.25	1223T-23-23	1013
2.875	1.375	3.5	13.75	1223T-27-13	973
	1.875	3.5	14.25	1223T-27-17	1013
	2.375	3.5	14.75	1223T-27-23	1052
3.375	1.875	3.5	14.75	1223T-33-17	1052
	2.375	4	15.75	1223T-33-23	1103
	2.875	4	16.25	1223T-33-27	1143
3.875	1.875	4	15.75	1223T-37-17	1103
	2.375	4.5	16.75	1223T-37-23	1154
	2.875	4.5	17.25	1223T-37-27	1193
4.875	2.375	4.5	17.75	1223T-47-23	1233
	2.875	4.5	17.75	1223T-47-27	1272
	3.375	4.5	18.25	1223T-47-33	1312
5.875	2.875	4.5	19.25	1223T-57-27	1352
	3.875	4.5	20.25	1223T-57-37	1431
	4.875	4.5	21.25	1223T-57-47	1510



For detailed dimensions, see corresponding size "A" Series Mold Bases.

WHEN ORDERING, PLEASE SPECIFY:

- Quantity & Item Number
- No. 1, No. 2, No. 3 or No. 7 Steel
- Locating Ring Item Number
- E, O and R Dimensions
- L Dimension (Leader Pin Length)
- Method of Shipment

1 3/8" T-Series Mold Bases

NO. 1 OR NO. 2 STEEL ASSEMBLIES

All plates above ejector housing are No. 1 or No. 2 Steel, respectively.

X-1 = 0.875				13.375 x 15"	
X-2	B	C	H	ITEM NUMBER	NET WT.
1.875	0.875	3	11.25	1315T-17-7	584
	1.375	3	11.75	1315T-17-13	612
	1.875	3	12.25	1315T-17-17	640
2.375	1.375	3.5	12.75	1315T-23-13	648
	1.875	3.5	13.25	1315T-23-17	677
	2.375	3.5	13.75	1315T-23-23	705
2.875	1.375	3.5	13.25	1315T-27-13	677
	1.875	3.5	13.75	1315T-27-17	705
	2.375	3.5	14.25	1315T-27-23	734
3.375	1.875	3.5	14.25	1315T-33-17	734
	2.375	4	15.25	1315T-33-23	770
	2.875	4	15.75	1315T-33-27	798
3.875	1.875	4	15.25	1315T-37-17	770
	2.375	4.5	16.25	1315T-37-23	806
	2.875	4.5	16.75	1315T-37-27	835
4.875	2.375	4.5	17.25	1315T-47-23	863
	2.875	4.5	17.75	1315T-47-27	892
	3.375	4.5	18.25	1315T-47-33	920
5.875	2.875	4.5	18.75	1315T-57-27	949
	3.875	4.5	19.75	1315T-57-37	1005
	4.875	4.5	20.75	1315T-57-47	1062

X-1 = 0.875				13.375 x 18"	
X-2	B	C	H	ITEM NUMBER	NET WT.
1.875	0.875	3	11.25	1318T-17-7	700
	1.375	3	11.75	1318T-17-13	734
	1.875	3	12.25	1318T-17-17	768
2.375	1.375	3.5	12.75	1318T-23-13	778
	1.875	3.5	13.25	1318T-23-17	812
	2.375	3.5	13.75	1318T-23-23	846
2.875	1.375	3.5	13.25	1318T-27-13	812
	1.875	3.5	13.75	1318T-27-17	846
	2.375	3.5	14.25	1318T-27-23	880
3.375	1.875	3.5	14.25	1318T-33-17	880
	2.375	4	15.25	1318T-33-23	924
	2.875	4	15.75	1318T-33-27	958
3.875	1.875	4	15.25	1318T-37-17	924
	2.375	4.5	16.25	1318T-37-23	968
	2.875	4.5	16.75	1318T-37-27	1002
4.875	2.375	4.5	17.25	1318T-47-23	1036
	2.875	4.5	17.75	1318T-47-27	1070
	3.375	4.5	18.25	1318T-47-33	1104
5.875	2.875	4.5	18.75	1318T-57-27	1138
	3.875	4.5	19.75	1318T-57-37	1206
	4.875	4.5	20.75	1318T-57-47	1274

NO. 3 STEEL ASSEMBLIES

"X-1", "X-2", and "B" Plates are No. 3 Steel. "A" -Clamping and Support Plates are No. 2 Steel.

X-1 = 0.875				13.375 x 20.75"	
X-2	B	C	H	ITEM NUMBER	NET WT.
1.875	0.875	3	11.25	1321T-17-7	807
	1.375	3	11.75	1321T-17-13	846
	1.875	3	12.25	1321T-17-17	886
2.375	1.375	3.5	12.75	1321T-23-13	897
	1.875	3.5	13.25	1321T-23-17	936
	2.375	3.5	13.75	1321T-23-23	975
2.875	1.375	3.5	13.25	1321T-27-13	936
	1.875	3.5	13.75	1321T-27-17	975
	2.375	3.5	14.25	1321T-27-23	1015
3.375	1.875	3.5	14.25	1321T-33-17	1015
	2.375	4	15.25	1321T-33-23	1065
	2.875	4	15.75	1321T-33-27	1104
3.875	1.875	4	15.25	1321T-37-17	1065
	2.375	4.5	16.25	1321T-37-23	1115
	2.875	4.5	16.75	1321T-37-27	1155
4.875	2.375	4.5	17.25	1321T-47-23	1194
	2.875	4.5	17.75	1321T-47-27	1233
	3.375	4.5	18.25	1321T-47-33	1272
5.875	2.875	4.5	18.75	1321T-57-27	1312
	3.875	4.5	19.75	1321T-57-37	1390
	4.875	4.5	20.75	1321T-57-47	1469

X-1 = 1.375				13.375 x 23.5"	
X-2	B	C	H	ITEM NUMBER	NET WT.
1.875	1.375	3	12.25	1323T-17-13	1003
	1.875	3	12.75	1323T-17-17	1047
	2.375	3.5	13.75	1323T-17-23	1104
2.375	1.375	3.5	13.25	1323T-23-13	1060
	1.875	3.5	13.75	1323T-23-17	1104
	2.375	3.5	14.25	1323T-23-23	1149
2.875	1.375	3.5	13.75	1323T-27-13	1104
	1.875	3.5	14.25	1323T-27-17	1149
	2.375	3.5	14.75	1323T-27-23	1194
3.375	1.875	3.5	14.75	1323T-33-17	1194
	2.375	4	15.75	1323T-33-23	1251
	2.875	4	16.25	1323T-33-27	1295
3.875	1.875	4	15.75	1323T-37-17	1251
	2.375	4.5	16.75	1323T-37-23	1308
	2.875	4.5	17.25	1323T-37-27	1352
4.875	2.375	4.5	17.75	1323T-47-23	1397
	2.875	4.5	18.25	1323T-47-27	1441
	3.375	4.5	18.75	1323T-47-33	1486
5.875	2.875	4.5	19.25	1323T-57-27	1530
	3.875	4.5	20.25	1323T-57-37	1619
	4.875	4.5	21.25	1323T-57-47	1708

NO. 7 STEEL ASSEMBLIES

Any or all plates available as requested.

X-1 = 1.375				13.375 x 26"	
X-2	B	C	H	ITEM NUMBER	NET WT.
1.875	1.375	3	12.25	1326T-17-13	1110
	1.875	3	12.75	1326T-17-17	1159
	2.375	3.5	13.75	1326T-17-23	1222
2.375	1.375	3.5	13.25	1326T-23-13	1173
	1.875	3.5	13.75	1326T-23-17	1222
	2.375	3.5	14.25	1326T-23-23	1271
2.875	1.375	3.5	13.75	1326T-27-13	1222
	1.875	3.5	14.25	1326T-27-17	1271
	2.375	3.5	14.75	1326T-27-23	1320
3.375	1.875	3.5	14.75	1326T-33-17	1320
	2.375	4	15.75	1326T-33-23	1384
	2.875	4	16.25	1326T-33-27	1433
3.875	1.875	4	15.75	1326T-37-17	1384
	2.375	4.5	16.75	1326T-37-23	1447
	2.875	4.5	17.25	1326T-37-27	1496
4.875	2.375	4.5	17.75	1326T-47-23	1545
	2.875	4.5	18.25	1326T-47-27	1594
	3.375	4.5	18.75	1326T-47-33	1644
5.875	2.875	4.5	19.25	1326T-57-27	1693
	3.875	4.5	20.25	1326T-57-37	1791
	4.875	4.5	21.25	1326T-57-47	1890

X-1 = 1.375				13.375 x 29.5"	
X-2	B	C	H	ITEM NUMBER	NET WT.
1.875	1.375	3	12.25	1329T-17-13	1259
	1.875	3	12.75	1329T-17-17	1315
	2.375	3.5	13.75	1329T-17-23	1386
2.375	1.375	3.5	13.25	1329T-23-13	1330
	1.875	3.5	13.75	1329T-23-17	1386
	2.375	3.5	14.25	1329T-23-23	1442
2.875	1.375	3.5	13.75	1329T-27-13	1386
	1.875	3.5	14.25	1329T-27-17	1442
	2.375	3.5	14.75	1329T-27-23	1498
3.375	1.875	3.5	14.75	1329T-33-17	1498
	2.375	4	15.75	1329T-33-23	1570
	2.875	4	16.25	1329T-33-27	1626
3.875	1.875	4	15.75	1329T-37-17	1570
	2.375	4.5	16.75	1329T-37-23	1641
	2.875	4.5	17.25	1329T-37-27	1697
4.875	2.375	4.5	17.75	1329T-47-23	1753
	2.875	4.5	18.25	1329T-47-27	1809
	3.375	4.5	18.75	1329T-47-33	1865
5.875	2.875	4.5	19.25	1329T-57-27	1921
	3.875	4.5	20.25	1329T-57-37	2032
	4.875	4.5	21.25	1329T-57-47	2145

WHEN ORDERING, PLEASE SPECIFY:

- Quantity & Item Number
- No. 1, No. 2, No. 3, or No. 7 Steel
- Locating Ring Item Number
- E, O and R Dimension
- L Dimension (Leader Pin Length)
- Method of Shipment

For detailed dimensions, see corresponding size "A" Series Mold Bases.

NOTE: For 3-Plate Extension Bushings, see page 195.

1 7/8" T-Series Mold Bases

NO. 1 OR NO. 2 STEEL ASSEMBLIES

All plates above ejector housing are No. 1 or No. 2 Steel, respectively.

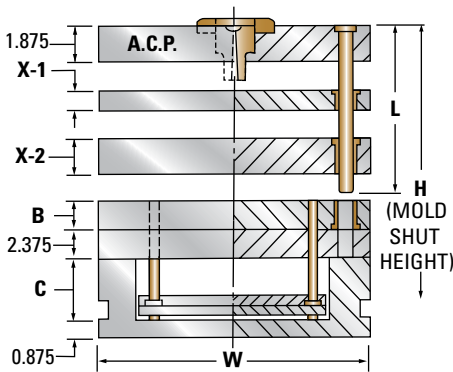
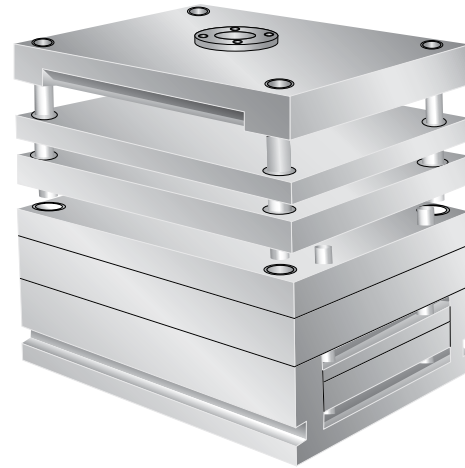
NO. 3 STEEL ASSEMBLIES

"X-1", "X-2" and "B" Plates are No. 3 Steel.

"A" -Clamping and Support Plates are No. 2 Steel.

NO. 7 STEEL ASSEMBLIES

Any or all plates available as requested.



For detailed dimensions, see corresponding size "A" Series Mold Bases.

X-1 = 0.875				14.875 x 17.875		X-1 = 1.375				14.875 x 23.75		X-1 = 1.375				14.875 x 29.5	
X-2	B	C	H	ITEM NUMBER	NET WT.	X-2	B	C	H	ITEM NUMBER	NET WT.	X-2	B	C	H	ITEM NUMBER	NET WT.
1.875	1.375	3	12.25	1518T-17-13	847	1.875	1.375	3	12.75	1524T-17-13	1175	1.875	1.375	3	12.75	1529T-17-13	1459
	1.875	3.5	13.25	1518T-17-17	894		1.875	3.5	13.75	1524T-17-17	1237		1.875	3.5	13.75	1529T-17-17	1537
	2.375	3.5	13.75	1518T-17-23	931		2.375	3.5	14.25	1524T-17-23	1287		2.375	3.5	14.25	1529T-17-23	1599
2.375	1.375	3.5	13.25	1518T-23-13	894	2.375	1.375	3.5	13.75	1524T-23-13	1237	2.375	1.375	3.5	13.75	1529T-23-13	1537
	1.875	3.5	13.75	1518T-23-17	931		1.875	3.5	14.25	1524T-23-17	1287		1.875	3.5	14.25	1529T-23-17	1599
	2.375	3.5	14.25	1518T-23-23	969		2.375	3.5	14.75	1524T-23-23	1337		2.375	3.5	14.75	1529T-23-23	1661
2.875	1.375	3.5	13.75	1518T-27-13	931	2.875	1.375	3.5	14.25	1524T-27-13	1287	2.875	1.375	3.5	14.25	1529T-27-13	1599
	1.875	3.5	14.25	1518T-27-17	969		1.875	3.5	14.75	1524T-27-17	1337		1.875	3.5	14.75	1529T-27-17	1661
	2.375	3.5	14.75	1518T-27-23	1007		2.375	3.5	15.25	1524T-27-23	1387		2.375	3.5	15.25	1529T-27-23	1723
3.375	1.875	4	15.25	1518T-33-17	1016	3.375	1.875	4	15.75	1524T-33-17	1400	3.375	1.875	4	15.75	1529T-33-17	1739
	2.375	4	15.75	1518T-33-23	1054		2.375	4	16.25	1524T-33-23	1450		2.375	4	16.25	1529T-33-23	1801
	2.875	4.5	16.75	1518T-33-27	1101		2.875	4.5	17.25	1524T-33-27	1513		2.875	4.5	17.25	1529T-33-27	1879
3.875	1.875	4	15.75	1518T-37-17	1054	3.875	1.875	4	16.25	1524T-37-17	1450	3.875	1.875	4	16.25	1529T-37-17	1801
	2.375	4.5	16.75	1518T-37-23	1101		2.375	4.5	17.25	1524T-37-23	1513		2.375	4.5	17.25	1529T-37-23	1879
	2.875	4.5	17.25	1518T-37-27	1139		2.875	4.5	17.75	1524T-37-27	1563		2.875	4.5	17.75	1529T-37-27	1941
4.875	2.375	4.5	17.75	1518T-47-23	1176	4.875	2.375	4.5	18.25	1524T-47-23	1613	4.875	2.375	4.5	18.25	1529T-47-23	2003
	2.875	4.5	18.25	1518T-47-27	1214		2.875	4.5	18.75	1524T-47-27	1663		2.875	4.5	18.75	1529T-47-27	2065
	3.375	4.5	18.75	1518T-47-33	1252		3.375	4.5	19.25	1524T-47-33	1713		3.375	4.5	19.25	1529T-47-33	2128
5.875	2.875	4.5	19.25	1518T-57-27	1289	5.875	2.875	4.5	19.75	1524T-57-27	1763	5.875	2.875	4.5	19.75	1529T-57-27	2190
	3.875	4.5	20.25	1518T-57-37	1365		3.875	4.5	20.75	1524T-57-37	1863		3.875	4.5	20.75	1529T-57-37	2314
	4.875	4.5	21.25	1518T-57-47	1440		4.875	4.5	21.75	1524T-57-47	1963		4.875	4.5	21.75	1529T-57-47	2438

WHEN ORDERING, PLEASE SPECIFY:

- Quantity & Item Number
- No. 1, No. 2, No. 3, or No. 7 Steel
- Locating Ring Item Number
- E, O and R Dimensions
- L Dimension (Leader Pin Length)
- Method of Shipment

NOTE: For 3-Plate Extension Bushings, see page 195.

15⁷/₈" T-Series Mold Bases

NO. 1 OR NO. 2 STEEL ASSEMBLIES

All plates above ejector housing are No. 1 or No. 2 Steel, respectively.

NO. 3 STEEL ASSEMBLIES

"X-1", "X-2", and "B" Plates are No. 3 Steel. "A" - Clamping and Support Plates are No. 2 Steel.

NO. 7 STEEL ASSEMBLIES

Any or all plates available as requested.

X-1 = 0.875				15.875 × 16"	
X-2	B	C	H	ITEM NUMBER	NET WT.
1.875	1.375	3	12.25	1616T-17-13	808
	1.875	3.5	13.25	1616T-17-17	852
	2.375	3.5	13.75	1616T-17-23	888
2.375	1.375	3.5	13.25	1616T-23-13	852
	1.875	3.5	13.75	1616T-23-17	888
	2.375	3.5	14.25	1616T-23-23	924
2.875	1.375	3.5	13.75	1616T-27-13	888
	1.875	3.5	14.25	1616T-27-17	924
	2.375	3.5	14.75	1616T-27-23	960
3.375	1.875	4	15.25	1616T-33-17	969
	2.375	4	15.75	1616T-33-23	1005
	2.875	4.5	16.75	1616T-33-27	1049
3.875	1.875	4	15.75	1616T-37-17	1005
	2.375	4.5	16.75	1616T-37-23	1049
	2.875	4.5	17.25	1616T-37-27	1085
4.875	2.375	4.5	17.75	1616T-47-23	1121
	2.875	4.5	18.25	1616T-47-27	1157
	3.375	4.5	18.75	1616T-47-33	1193
5.875	2.875	4.5	19.25	1616T-57-27	1229
	3.875	4.5	20.25	1616T-57-37	1301
	4.875	4.5	21.25	1616T-57-47	1373

X-1 = 1.375				15.875 × 23.5"	
X-2	B	C	H	ITEM NUMBER	NET WT.
1.875	1.375	3	12.75	1623T-17-13	1239
	1.875	3.5	13.75	1623T-17-17	1304
	2.375	3.5	14.25	1623T-17-23	1357
2.375	1.375	3.5	13.75	1623T-23-13	1304
	1.875	3.5	14.25	1623T-23-17	1357
	2.375	3.5	14.75	1623T-23-23	1410
2.875	1.375	3.5	14.25	1623T-27-13	1357
	1.875	3.5	14.75	1623T-27-17	1410
	2.375	3.5	15.25	1623T-27-23	1463
3.375	1.875	4	15.75	1623T-33-17	1475
	2.375	4	16.25	1623T-33-23	1528
	2.875	4.5	17.25	1623T-33-27	1593
3.875	1.875	4	16.25	1623T-37-17	1528
	2.375	4.5	17.25	1623T-37-23	1593
	2.875	4.5	17.75	1623T-37-27	1646
4.875	2.375	4.5	18.25	1623T-47-23	1699
	2.875	4.5	18.75	1623T-47-27	1752
	3.375	4.5	19.25	1623T-47-33	1805
5.875	2.875	4.5	19.75	1623T-57-27	1858
	3.875	4.5	20.75	1623T-57-37	1963
	4.875	4.5	21.75	1623T-57-47	2069

X-1 = 1.375				15.875 × 29.5"	
X-2	B	C	H	ITEM NUMBER	NET WT.
1.875	1.375	3	12.75	1629T-17-13	1555
	1.875	3.5	13.75	1629T-17-17	1637
	2.375	3.5	14.25	1629T-17-23	1703
2.375	1.375	3.5	13.75	1629T-23-13	1637
	1.875	3.5	14.25	1629T-23-17	1703
	2.375	3.5	14.75	1629T-23-23	1770
2.875	1.375	3.5	14.25	1629T-27-13	1703
	1.875	3.5	14.75	1629T-27-17	1770
	2.375	3.5	15.25	1629T-27-23	1836
3.375	1.875	4	15.75	1629T-33-17	1852
	2.375	4	16.25	1629T-33-23	1918
	2.875	4.5	17.25	1629T-33-27	2000
3.875	1.875	4	16.25	1629T-37-17	1918
	2.375	4.5	17.25	1629T-37-23	2000
	2.875	4.5	17.75	1629T-37-27	2066
4.875	2.375	4.5	18.25	1629T-47-23	2133
	2.875	4.5	18.75	1629T-47-27	2199
	3.375	4.5	19.25	1629T-47-33	2266
5.875	2.875	4.5	19.75	1629T-57-27	2332
	3.875	4.5	20.75	1629T-57-37	2465
	4.875	4.5	21.75	1629T-57-47	2597

X-1 = 0.875				15.875 × 20"	
X-2	B	C	H	ITEM NUMBER	NET WT.
1.875	1.375	3	12.25	1620T-17-13	1009
	1.875	3.5	13.25	1620T-17-17	1065
	2.375	3.5	13.75	1620T-17-23	1110
2.375	1.375	3.5	13.25	1620T-23-13	1065
	1.875	3.5	13.75	1620T-23-17	1110
	2.375	3.5	14.25	1620T-23-23	1155
2.875	1.375	3.5	13.75	1620T-27-13	1110
	1.875	3.5	14.25	1620T-27-17	1155
	2.375	3.5	14.75	1620T-27-23	1200
3.375	1.875	4	15.25	1620T-33-17	1211
	2.375	4	15.75	1620T-33-23	1256
	2.875	4.5	16.75	1620T-33-27	1311
3.875	1.875	4	15.75	1620T-37-17	1256
	2.375	4.5	16.75	1620T-37-23	1311
	2.875	4.5	17.25	1620T-37-27	1356
4.875	2.375	4.5	17.75	1620T-47-23	1401
	2.875	4.5	18.25	1620T-47-27	1446
	3.375	4.5	18.75	1620T-47-33	1491
5.875	2.875	4.5	19.25	1620T-57-27	1536
	3.875	4.5	20.25	1620T-57-37	1626
	4.875	4.5	21.25	1620T-57-47	1716

X-1 = 1.375				15.875 × 26"	
X-2	B	C	H	ITEM NUMBER	NET WT.
1.875	1.375	3	12.75	1626T-17-13	1371
	1.875	3.5	13.75	1626T-17-17	1443
	2.375	3.5	14.25	1626T-17-23	1501
2.375	1.375	3.5	13.75	1626T-23-13	1443
	1.875	3.5	14.25	1626T-23-17	1501
	2.375	3.5	14.75	1626T-23-23	1560
2.875	1.375	3.5	14.25	1626T-27-13	1501
	1.875	3.5	14.75	1626T-27-17	1560
	2.375	3.5	15.25	1626T-27-23	1618
3.375	1.875	4	15.75	1626T-33-17	1632
	2.375	4	16.25	1626T-33-23	1691
	2.875	4.5	17.25	1626T-33-27	1763
3.875	1.875	4	16.25	1626T-37-17	1691
	2.375	4.5	17.25	1626T-37-23	1763
	2.875	4.5	17.75	1626T-37-27	1821
4.875	2.375	4.5	18.25	1626T-47-23	1880
	2.875	4.5	18.75	1626T-47-27	1938
	3.375	4.5	19.25	1626T-47-33	1997
5.875	2.875	4.5	19.75	1626T-57-27	2055
	3.875	4.5	20.75	1626T-57-37	2172
	4.875	4.5	21.75	1626T-57-47	2289

X-1 = 1.375				15.875 × 35.5"	
X-2	B	C	H	ITEM NUMBER	NET WT.
1.875	1.375	3	12.75	1635T-17-13	1871
	1.875	3.5	13.75	1635T-17-17	1970
	2.375	3.5	14.25	1635T-17-23	2050
2.375	1.375	3.5	13.75	1635T-23-13	1970
	1.875	3.5	14.25	1635T-23-17	2050
	2.375	3.5	14.75	1635T-23-23	2130
2.875	1.375	3.5	14.25	1635T-27-13	2050
	1.875	3.5	14.75	1635T-27-17	2130
	2.375	3.5	15.25	1635T-27-23	2209
3.375	1.875	4	15.75	1635T-33-17	2228
	2.375	4	16.25	1635T-33-23	2308
	2.875	4.5	17.25	1635T-33-27	2407
3.875	1.875	4	16.25	1635T-37-17	2308
	2.375	4.5	17.25	1635T-37-23	2407
	2.875	4.5	17.75	1635T-37-27	2487
4.875	2.375	4.5	18.25	1635T-47-23	2566
	2.875	4.5	18.75	1635T-47-27	2646
	3.375	4.5	19.25	1635T-47-33	2726
5.875	2.875	4.5	19.75	1635T-57-27	2806
	3.875	4.5	20.75	1635T-57-37	2966
	4.875	4.5	21.75	1635T-57-47	3125

WHEN ORDERING, PLEASE SPECIFY:

- 1. Quantity & Item Number
- 2. No. 1, No. 2, No. 3, or No. 7 Steel
- 3. Locating Ring Item Number
- 4. E, O and R Dimensions
- 5. L Dimension (Leader Pin Length)
- 6. Method of Shipment

For detailed dimensions, see corresponding size "A" Series Mold Bases.

NOTE: For 3-Plate Extension Bushings, see page 195.

16 1/2" T-Series Mold Bases

NO. 1 OR NO. 2 STEEL ASSEMBLIES

All plates above ejector housing are No. 1 or No. 2 Steel, respectively.

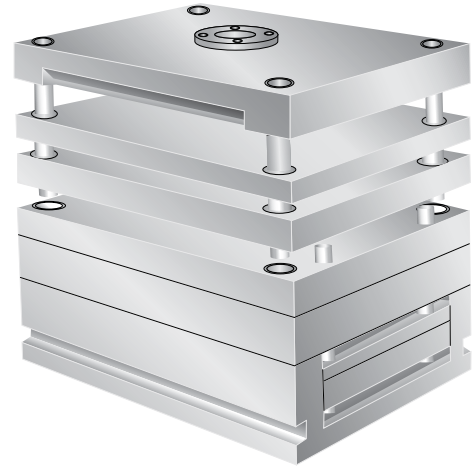
NO. 3 STEEL ASSEMBLIES

"X-1", "X-2" and "B" Plates are No. 3 Steel.

"A" -Clamping and Support Plates are No. 2 Steel.

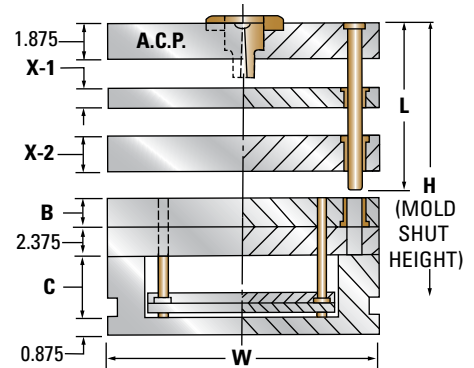
NO. 7 STEEL ASSEMBLIES

Any or all plates available as requested.



X-1 = 1.375				16.5 x 23.75	
X-2	B	C	H	ITEM NUMBER	NET WT.
1.875	1.375	3	12.75	1724T-17-13	1300
	1.875	3.5	13.75	1724T-17-17	1369
	2.375	3.5	14.25	1724T-17-23	1424
2.375	1.375	3.5	13.75	1724T-23-13	1369
	1.875	3.5	14.25	1724T-23-17	1424
	2.375	3.5	14.75	1724T-23-23	1480
2.875	1.375	3.5	14.25	1724T-27-13	1424
	1.875	3.5	14.75	1724T-27-17	1480
	2.375	3.5	15.25	1724T-27-23	1535
3.375	1.875	4	15.75	1724T-33-17	1548
	2.375	4	16.25	1724T-33-23	1603
	2.875	4.5	17.25	1724T-33-27	1671
3.875	1.875	4	16.25	1724T-37-17	1603
	2.375	4.5	17.25	1724T-37-23	1671
	2.875	4.5	17.75	1724T-37-27	1727
4.875	2.375	4.5	18.25	1724T-47-23	1782
	2.875	4.5	18.75	1724T-47-27	1838
	3.375	4.5	19.25	1724T-47-33	1893
5.875	2.875	4.5	19.75	1724T-57-27	1949
	3.875	4.5	20.75	1724T-57-37	2060
	4.875	4.5	21.75	1724T-57-47	2171

X-1 = 1.375				16.5 x 29.5	
X-2	B	C	H	ITEM NUMBER	NET WT.
1.875	1.375	3	12.75	1729T-17-13	1615
	1.875	3.5	13.75	1729T-17-17	1700
	2.375	3.5	14.25	1729T-17-23	1769
2.375	1.375	3.5	13.75	1729T-23-13	1700
	1.875	3.5	14.25	1729T-23-17	1769
	2.375	3.5	14.75	1729T-23-23	1838
2.875	1.375	3.5	14.25	1729T-27-13	1769
	1.875	3.5	14.75	1729T-27-17	1838
	2.375	3.5	15.25	1729T-27-23	1907
3.375	1.875	4	15.75	1729T-33-17	1922
	2.375	4	16.25	1729T-33-23	1991
	2.875	4.5	17.25	1729T-33-27	2076
3.875	1.875	4	16.25	1729T-37-17	1991
	2.375	4.5	17.25	1729T-37-23	2076
	2.875	4.5	17.75	1729T-37-27	2145
4.875	2.375	4.5	18.25	1729T-47-23	2214
	2.875	4.5	18.75	1729T-47-27	2283
	3.375	4.5	19.25	1729T-47-33	2352
5.875	2.875	4.5	19.75	1729T-57-27	2421
	3.875	4.5	20.75	1729T-57-37	2559
	4.875	4.5	21.75	1729T-57-47	2696



For detailed dimensions, see corresponding size "A" Series Mold Bases.

NOTE: For 3-Plate Extension Bushings, see page 195.

WHEN ORDERING, PLEASE SPECIFY:

- Quantity & Item Number
- No. 1, No. 2, No. 3, or No. 7 Steel
- Locating Ring Item Number
- E, O and R Dimensions
- L Dimension (Leader Pin Length)
- Method of Shipment

17⁷/₈" T-Series Mold Bases

NO. 1 OR NO. 2 STEEL ASSEMBLIES

All plates above ejector housing are No. 1 or No. 2 Steel, respectively.

NO. 3 STEEL ASSEMBLIES

"X-1", "X-2", and "B" Plates are No. 3 Steel.
"A" -Clamping and Support Plates are No. 2 Steel.

NO. 7 STEEL ASSEMBLIES

Any or all plates available as requested.

X-1 = 1.375				17.875 × 18"	
X-2	B	C	H	ITEM NUMBER	NET WT.
1.875	1.375	3	12.75	1818T-17-13	1066
	1.875	3	13.25	1818T-17-17	1112
	2.375	3.5	14.25	1818T-17-23	1167
2.375	1.375	3.5	13.75	1818T-23-13	1122
	1.875	3.5	14.25	1818T-23-17	1167
	2.375	3.5	14.75	1818T-23-23	1213
2.875	1.375	3.5	14.25	1818T-27-13	1167
	1.875	3.5	14.75	1818T-27-17	1213
	2.375	3.5	15.25	1818T-27-23	1258
3.375	1.875	4	15.75	1818T-33-17	1268
	2.375	4	16.25	1818T-33-23	1313
	2.875	4.5	17.25	1818T-33-27	1369
3.875	1.875	4	16.25	1818T-37-17	1313
	2.375	4.5	17.25	1818T-37-23	1369
	2.875	4.5	17.75	1818T-37-27	1414
4.875	2.375	4.5	18.25	1818T-47-23	1460
	2.875	4.5	18.75	1818T-47-27	1505
	3.375	4.5	19.25	1818T-47-33	1551
5.875	2.875	4.5	19.75	1818T-57-27	1596
	3.875	4.5	20.75	1818T-57-37	1688
	4.875	4.5	21.75	1818T-57-47	1779

X-1 = 1.375				17.875 × 23.5	
X-2	B	C	H	ITEM NUMBER	NET WT.
1.875	1.375	3	12.75	1823T-17-13	1392
	1.875	3	13.25	1823T-17-17	1452
	2.375	3.5	14.25	1823T-17-23	1524
2.375	1.375	3.5	13.75	1823T-23-13	1464
	1.875	3.5	14.25	1823T-23-17	1524
	2.375	3.5	14.75	1823T-23-23	1583
2.875	1.375	3.5	14.25	1823T-27-13	1524
	1.875	3.5	14.75	1823T-27-17	1583
	2.375	3.5	15.25	1823T-27-23	1643
3.375	1.875	4	15.75	1823T-33-17	1655
	2.375	4	16.25	1823T-33-23	1714
	2.875	4.5	17.25	1823T-33-27	1786
3.875	1.875	4	16.25	1823T-37-17	1714
	2.375	4.5	17.25	1823T-37-23	1786
	2.875	4.5	17.75	1823T-37-27	1846
4.875	2.375	4.5	18.25	1823T-47-23	1905
	2.875	4.5	18.75	1823T-47-27	1965
	3.375	4.5	19.25	1823T-47-33	2024
5.875	2.875	4.5	19.75	1823T-57-27	2084
	3.875	4.5	20.75	1823T-57-37	2203
	4.875	4.5	21.75	1823T-57-47	2322

X-1 = 1.375				17.875 × 29.5	
X-2	B	C	H	ITEM NUMBER	NET WT.
1.875	1.375	3	12.75	1829T-17-13	1747
	1.875	3	13.25	1829T-17-17	1822
	2.375	3.5	14.25	1829T-17-23	1912
2.375	1.375	3.5	13.75	1829T-23-13	1838
	1.875	3.5	14.25	1829T-23-17	1912
	2.375	3.5	14.75	1829T-23-23	1987
2.875	1.375	3.5	14.25	1829T-27-13	1912
	1.875	3.5	14.75	1829T-27-17	1987
	2.375	3.5	15.25	1829T-27-23	2062
3.375	1.875	4	15.75	1829T-33-17	2077
	2.375	4	16.25	1829T-33-23	2152
	2.875	4.5	17.25	1829T-33-27	2242
3.875	1.875	4	16.25	1829T-37-17	2152
	2.375	4.5	17.25	1829T-37-23	2242
	2.875	4.5	17.75	1829T-37-27	2317
4.875	2.375	4.5	18.25	1829T-47-23	2392
	2.875	4.5	18.75	1829T-47-27	2466
	3.375	4.5	19.25	1829T-47-33	2541
5.875	2.875	4.5	19.75	1829T-57-27	2616
	3.875	4.5	20.75	1829T-57-37	2765
	4.875	4.5	21.75	1829T-57-47	2915

X-1 = 1.375				17.875 × 20"	
X-2	B	C	H	ITEM NUMBER	NET WT.
1.875	1.375	3	12.75	1820T-17-13	1185
	1.875	3	13.25	1820T-17-17	1235
	2.375	3.5	14.25	1820T-17-23	1297
2.375	1.375	3.5	13.75	1820T-23-13	1246
	1.875	3.5	14.25	1820T-23-17	1297
	2.375	3.5	14.75	1820T-23-23	1347
2.875	1.375	3.5	14.25	1820T-27-13	1297
	1.875	3.5	14.75	1820T-27-17	1347
	2.375	3.5	15.25	1820T-27-23	1398
3.375	1.875	4	15.75	1820T-33-17	1409
	2.375	4	16.25	1820T-33-23	1459
	2.875	4.5	17.25	1820T-33-27	1521
3.875	1.875	4	16.25	1820T-37-17	1459
	2.375	4.5	17.25	1820T-37-23	1521
	2.875	4.5	17.75	1820T-37-27	1571
4.875	2.375	4.5	18.25	1820T-47-23	1622
	2.875	4.5	18.75	1820T-47-27	1672
	3.375	4.5	19.25	1820T-47-33	1723
5.875	2.875	4.5	19.75	1820T-57-27	1774
	3.875	4.5	20.75	1820T-57-37	1875
	4.875	4.5	21.75	1820T-57-47	1976

X-1 = 1.375				17.875 × 26"	
X-2	B	C	H	ITEM NUMBER	NET WT.
1.875	1.375	3	12.75	1826T-17-13	1540
	1.875	3	13.25	1826T-17-17	1606
	2.375	3.5	14.25	1826T-17-23	1686
2.375	1.375	3.5	13.75	1826T-23-13	1620
	1.875	3.5	14.25	1826T-23-17	1686
	2.375	3.5	14.75	1826T-23-23	1751
2.875	1.375	3.5	14.25	1826T-27-13	1686
	1.875	3.5	14.75	1826T-27-17	1751
	2.375	3.5	15.25	1826T-27-23	1817
3.375	1.875	4	15.75	1826T-33-17	1831
	2.375	4	16.25	1826T-33-23	1897
	2.875	4.5	17.25	1826T-33-27	1976
3.875	1.875	4	16.25	1826T-37-17	1897
	2.375	4.5	17.25	1826T-37-23	1976
	2.875	4.5	17.75	1826T-37-27	2042
4.875	2.375	4.5	18.25	1826T-47-23	2108
	2.875	4.5	18.75	1826T-47-27	2174
	3.375	4.5	19.25	1826T-47-33	2240
5.875	2.875	4.5	19.75	1826T-57-27	2306
	3.875	4.5	20.75	1826T-57-37	2437
	4.875	4.5	21.75	1826T-57-47	2569

X-1 = 1.375				17.875 × 35.5	
X-2	B	C	H	ITEM NUMBER	NET WT.
1.875	1.375	3	12.75	1835T-17-13	2103
	1.875	3	13.25	1835T-17-17	2193
	2.375	3.5	14.25	1835T-17-23	2301
2.375	1.375	3.5	13.75	1835T-23-13	2211
	1.875	3.5	14.25	1835T-23-17	2301
	2.375	3.5	14.75	1835T-23-23	2391
2.875	1.375	3.5	14.25	1835T-27-13	2301
	1.875	3.5	14.75	1835T-27-17	2391
	2.375	3.5	15.25	1835T-27-23	2481
3.375	1.875	4	15.75	1835T-33-17	2500
	2.375	4	16.25	1835T-33-23	2590
	2.875	4.5	17.25	1835T-33-27	2699
3.875	1.875	4	16.25	1835T-37-17	2590
	2.375	4.5	17.25	1835T-37-23	2699
	2.875	4.5	17.75	1835T-37-27	2788
4.875	2.375	4.5	18.25	1835T-47-23	2878
	2.875	4.5	18.75	1835T-47-27	2968
	3.375	4.5	19.25	1835T-47-33	3058
5.875	2.875	4.5	19.75	1835T-57-27	3148
	3.875	4.5	20.75	1835T-57-37	3328
	4.875	4.5	21.75	1835T-57-47	3508

WHEN ORDERING, PLEASE SPECIFY:

- Quantity & Item Number
- No. 1, No. 2, No. 3, or No. 7 Steel
- Locating Ring Item Number
- E, O and R Dimensions
- L Dimension (Leader Pin Length)
- Method of Shipment

For detailed dimensions, see corresponding size "A" Series Mold Bases.

NOTE: For 3-Plate Extension Bushings, see page 195.

19 1/2" T-Series Mold Bases

NO. 1 OR NO. 2 STEEL ASSEMBLIES

All plates above ejector housing are No. 1 or No. 2 Steel, respectively.

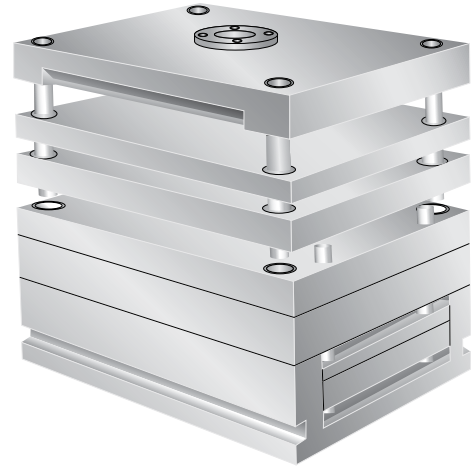
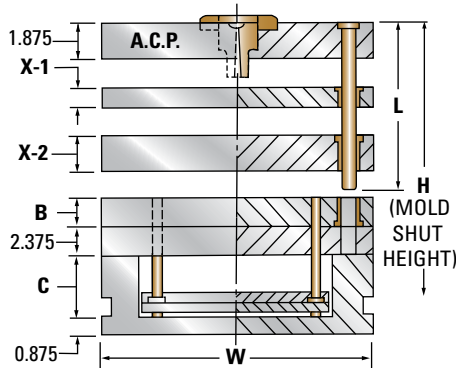
NO. 3 STEEL ASSEMBLIES

"X-1", "X-2" and "B" Plates are No. 3 Steel.

"A" -Clamping and Support Plates are No. 2 Steel.

NO. 7 STEEL ASSEMBLIES

Any or all plates available as requested.



For detailed dimensions, see corresponding size "A" Series Mold Bases.

X-1 = 1.375				19.5 x 23.75		X-1 = 1.375				19.5 x 29.5		X-1 = 1.375				19.5 x 35.5	
X-2	B	C	H	ITEM NUMBER	NET WT.	X-2	B	C	H	ITEM NUMBER	NET WT.	X-2	B	C	H	ITEM NUMBER	NET WT.
1.875	1.375	3	12.75	1924T-17-13	1533	1.875	1.375	3	12.75	1929T-17-13	1903	1.875	1.375	3	12.75	1935T-17-13	2291
	1.875	3	13.25	1924T-17-17	1598		1.875	3	13.25	1929T-17-17	1985		1.875	3	13.25	1935T-17-17	2389
	2.375	3.5	14.25	1924T-17-23	1676		2.375	3.5	14.25	1929T-17-23	2082		2.375	3.5	14.25	1935T-17-23	2506
2.375	1.375	3.5	13.75	1924T-23-13	1611	2.375	1.375	3.5	13.75	1929T-23-13	2001	2.375	1.375	3.5	13.75	1935T-23-13	2408
	1.875	3.5	14.25	1924T-23-17	1676		1.875	3.5	14.25	1929T-23-17	2082		1.875	3.5	14.25	1935T-23-17	2506
	2.375	3.5	14.75	1924T-23-23	1742		2.375	3.5	14.75	1929T-23-23	2164		2.375	3.5	14.75	1935T-23-23	2604
2.875	1.375	3.5	14.25	1924T-27-13	1676	2.875	1.375	3.5	14.25	1929T-27-13	2082	2.875	1.375	3.5	14.25	1935T-27-13	2506
	1.875	3.5	14.75	1924T-27-17	1742		1.875	3.5	14.75	1929T-27-17	2164		1.875	3.5	14.75	1935T-27-17	2604
	2.375	3.5	15.25	1924T-27-23	1808		2.375	3.5	15.25	1929T-27-23	2245		2.375	3.5	15.25	1935T-27-23	2702
3.375	1.875	4	15.75	1924T-33-17	1820	3.375	1.875	4	15.75	1929T-33-17	2261	3.375	1.875	4	15.75	1935T-33-17	2721
	2.375	4	16.25	1924T-33-23	1886		2.375	4	16.25	1929T-33-23	2342		2.375	4	16.25	1935T-33-23	2819
	2.875	4.5	17.25	1924T-33-27	1964		2.875	4.5	17.25	1929T-33-27	2439		2.875	4.5	17.25	1935T-33-27	2936
3.875	1.875	4	16.25	1924T-37-17	1886	3.875	1.875	4	16.25	1929T-37-17	2342	3.875	1.875	4	16.25	1935T-37-17	2819
	2.375	4.5	17.25	1924T-37-23	1964		2.375	4.5	17.25	1929T-37-23	2439		2.375	4.5	17.25	1935T-37-23	2936
	2.875	4.5	17.75	1924T-37-27	2030		2.875	4.5	17.75	1929T-37-27	2521		2.875	4.5	17.75	1935T-37-27	3034
4.875	2.375	4.5	18.25	1924T-47-23	2095	4.875	2.375	4.5	18.25	1929T-47-23	2602	4.875	2.375	4.5	18.25	1935T-47-23	3132
	2.875	4.5	18.75	1924T-47-27	2161		2.875	4.5	18.75	1929T-47-27	2684		2.875	4.5	18.75	1935T-47-27	3230
	3.375	4.5	19.25	1924T-47-33	2226		3.375	4.5	19.25	1929T-47-33	2765		3.375	4.5	19.25	1935T-47-33	3328
5.875	2.875	4.5	19.75	1924T-57-27	2292	5.875	2.875	4.5	19.75	1929T-57-27	2847	5.875	2.875	4.5	19.75	1935T-57-27	3426
	3.875	4.5	20.75	1924T-57-37	2423		3.875	4.5	20.75	1929T-57-37	3010		3.875	4.5	20.75	1935T-57-37	3622
	4.875	4.5	21.75	1924T-57-47	2554		4.875	4.5	21.75	1929T-57-47	3173		4.875	4.5	21.75	1935T-57-47	3818

WHEN ORDERING, PLEASE SPECIFY:

- Quantity & Item Number
- No. 1, No. 2, No. 3, or No. 7 Steel
- Locating Ring Item Number
- E, O and R Dimensions
- L Dimension (Leader Pin Length)
- Method of Shipment

NOTE: For 3-Plate Extension Bushings, see page 195.

23³/₄" T-Series Mold Bases

NO. 1 OR NO. 2 STEEL ASSEMBLIES

All plates above ejector housing are No. 1 or No. 2 Steel, respectively.

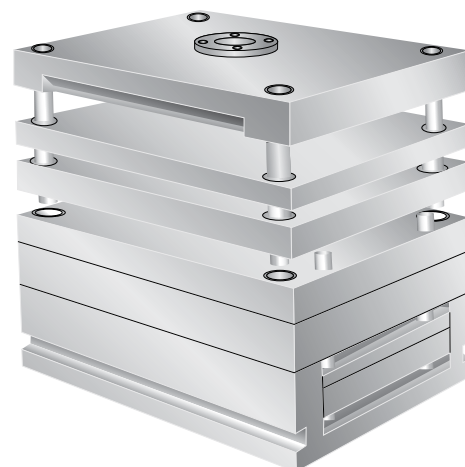
NO. 3 STEEL ASSEMBLIES

"X-1", "X-2" and "B" Plates are No. 3 Steel.

"A" -Clamping and Support Plates are No. 2 Steel

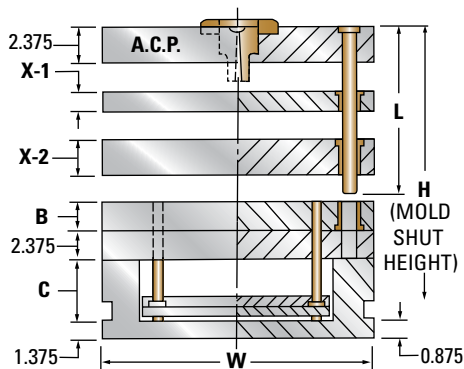
NO. 7 STEEL ASSEMBLIES

Any or all plates available as requested.



For detailed dimensions, see corresponding size "A" Series Mold Bases.

NOTE: Clamp slots for 23.75" wide bases will be type B, not type D as shown in photo.



X-1 = 1.375				23.75 x 23.75	
X-2	B	C	H	ITEM NUMBER	NET WT.
1.875	1.375	3	13.75	2424T-17-13	2021
	1.875	3	14.25	2424T-17-17	2101
	2.375	3.5	15.25	2424T-17-23	2194
2.375	1.375	3.5	14.75	2424T-23-13	2114
	1.875	3.5	15.25	2424T-23-17	2194
	2.375	3.5	15.75	2424T-23-23	2274
2.875	1.375	3.5	15.25	2424T-27-13	2194
	1.875	3.5	15.75	2424T-27-17	2274
	2.375	3.5	16.25	2424T-27-23	2353
3.375	1.875	4	16.75	2424T-33-17	2366
	2.375	4	17.25	2424T-33-23	2446
	2.875	4.5	18.25	2424T-33-27	2538
3.875	1.875	4	17.25	2424T-37-17	2446
	2.375	4.5	18.25	2424T-37-23	2538
	2.875	4.5	18.75	2424T-37-27	2618
4.875	2.375	4.5	19.25	2424T-47-23	2698
	2.875	4.5	19.75	2424T-47-27	2778
	3.375	4.5	20.25	2424T-47-33	2858
5.875	2.875	4.5	20.75	2424T-57-27	2938
	3.875	4.5	21.75	2424T-57-37	3098
	4.875	4.5	22.75	2424T-57-47	3258

X-1 = 1.375				23.75 x 29.5	
X-2	B	C	H	ITEM NUMBER	NET WT.
1.875	1.375	3	13.75	2429T-17-13	2510
	1.875	3	14.25	2429T-17-17	2610
	2.375	3.5	15.25	2429T-17-23	2725
2.375	1.375	3.5	14.75	2429T-23-13	2625
	1.875	3.5	15.25	2429T-23-17	2725
	2.375	3.5	15.75	2429T-23-23	2824
2.875	1.375	3.5	15.25	2429T-27-13	2725
	1.875	3.5	15.75	2429T-27-17	2824
	2.375	3.5	16.25	2429T-27-23	2923
3.375	1.875	4	16.75	2429T-33-17	2939
	2.375	4	17.25	2429T-33-23	3038
	2.875	4.5	18.25	2429T-33-27	3153
3.875	1.875	4	17.25	2429T-37-17	3038
	2.375	4.5	18.25	2429T-37-23	3153
	2.875	4.5	18.75	2429T-37-27	3252
4.875	2.375	4.5	19.25	2429T-47-23	3351
	2.875	4.5	19.75	2429T-47-27	3451
	3.375	4.5	20.25	2429T-47-33	3550
5.875	2.875	4.5	20.75	2429T-57-27	3649
	3.875	4.5	21.75	2429T-57-37	3848
	4.875	4.5	22.75	2429T-57-47	4046

X-1 = 1.375				23.75 x 35.5	
X-2	B	C	H	ITEM NUMBER	NET WT.
1.875	1.375	3	13.75	2435T-17-13	3021
	1.875	3	14.25	2435T-17-17	3140
	2.375	3.5	15.25	2435T-17-23	3279
2.375	1.375	3.5	14.75	2435T-23-13	3159
	1.875	3.5	15.25	2435T-23-17	3279
	2.375	3.5	15.75	2435T-23-23	3398
2.875	1.375	3.5	15.25	2435T-27-13	3279
	1.875	3.5	15.75	2435T-27-17	3398
	2.375	3.5	16.25	2435T-27-23	3518
3.375	1.875	4	16.75	2435T-33-17	3536
	2.375	4	17.25	2435T-33-23	3656
	2.875	4.5	18.25	2435T-33-27	3794
3.875	1.875	4	17.25	2435T-37-17	3656
	2.375	4.5	18.25	2435T-37-23	3794
	2.875	4.5	18.75	2435T-37-27	3914
4.875	2.375	4.5	19.25	2435T-47-23	4033
	2.875	4.5	19.75	2435T-47-27	4152
	3.375	4.5	20.25	2435T-47-33	4272
5.875	2.875	4.5	20.75	2435T-57-27	4391
	3.875	4.5	21.75	2435T-57-37	4630
	4.875	4.5	22.75	2435T-57-47	4869

WHEN ORDERING, PLEASE SPECIFY:

- Quantity & Item Number
- No. 1, No. 2, No. 3, or No. 7 Steel
- Locating Ring Item Number
- E, O and R Dimensions
- L Dimension (Leader Pin Length)
- Method of Shipment

NOTE: For 3-Plate Extension Bushings, see page 195.

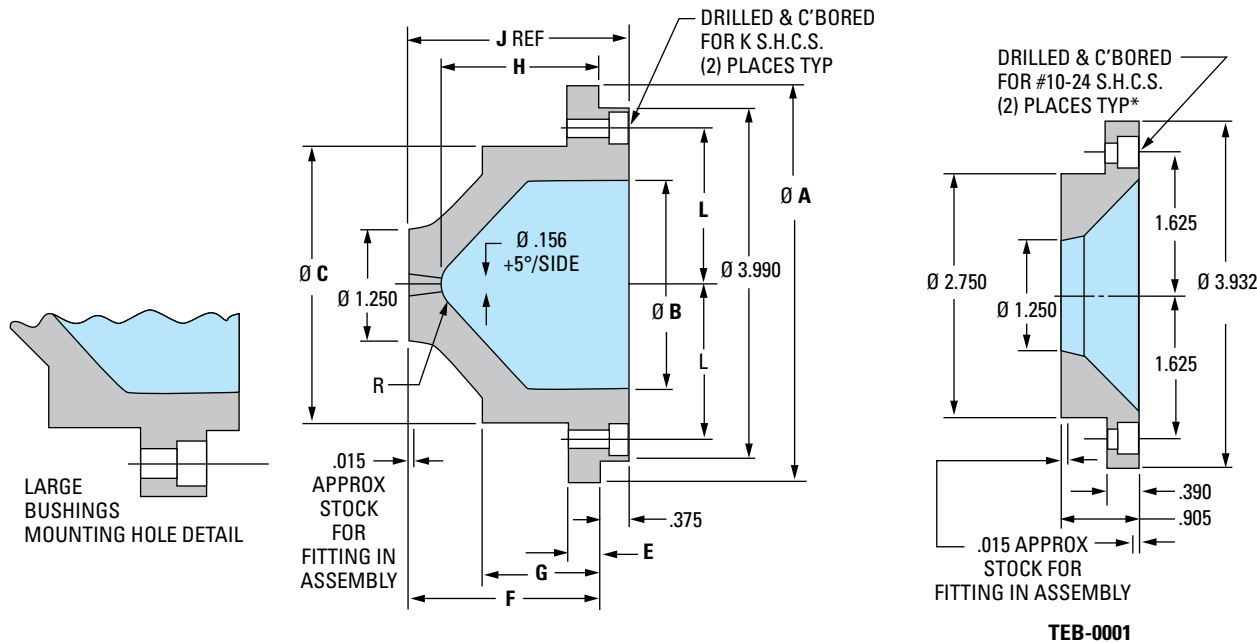
3-Plate Extension Bushings

Three-plate extension bushings can save material, reduce cycle time and help prevent runner hang-ups in 3-plate molds.



Runner Stripper Plate Bushing
TEB-0001

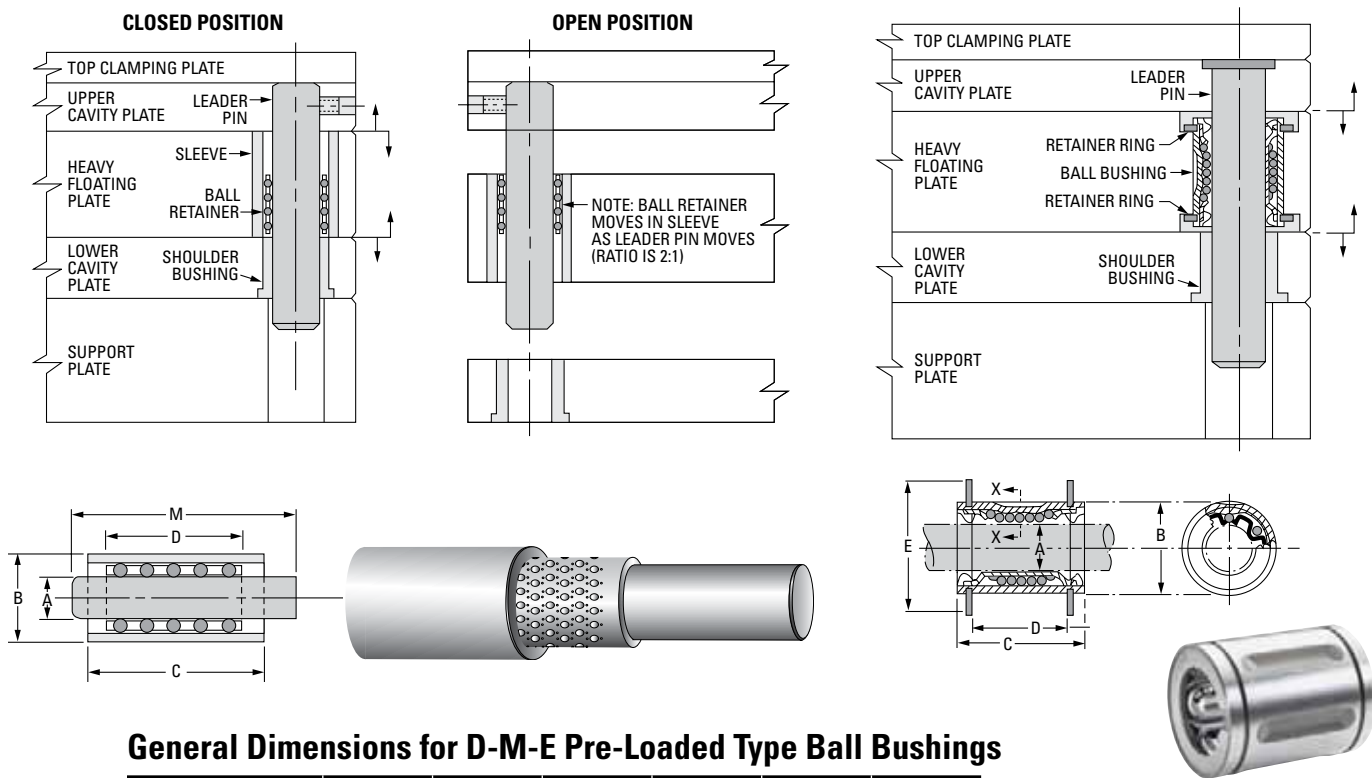
- NOTES:**
1. Stripper plate bushing TEB-0001 is used with all small and large extension nozzle bushings.
 2. Appropriate S.H.C.S. are included with all bushings (TEB-0001 thru TEB-0009).
 3. Select small or large bushing based on "A" clamping plate (A.C.P.) thickness, X-1 stripper plate thickness, machine nozzle spherical radius and machine nozzle clearance requirements.



ITEM NUMBER	R SPH. RAD	Ø A	Ø B	Ø C	E	F	G	H	J	K	L
TEB-0002	1/2	4.490	2.375	3.120	.375	2.265	1.377	1.875	2.640	#10-24 x 7/8 LONG (2) INCLUDED	1.781
TEB-0003	3/4							1.812			
TEB-0004	1/2							2.375			
TEB-0005	3/4	5.490	3.250	3.932	.750	2.765	1.877	2.312	3.140	5/16-18 x 7/8 LONG (2) INCLUDED	2.312
TEB-0006	1/2							2.375			
TEB-0007	3/4							2.312			
TEB-0008	1/2							2.875			
TEB-0009	3/4	5.490	3.250	3.932	.750	3.265	2.377	2.812	3.640	5/16-18 x 7/8 LONG (2) INCLUDED	2.312
TEB-0009	3/4							2.812			

Ball Bushings for Floating Plates

Ball Bushings are a highly effective means of reducing frictional drag in floating plates within a mold. Multiple-opening molds, with heavy floating (X) plates, are the most frequent application for either Lineal type or Pre-Loaded type Ball Bushings.



General Dimensions for D-M-E Pre-Loaded Type Ball Bushings

NOMINAL SIZE	3/4	1"	1 1/4	1 1/2	1 3/4	2"
A (PIN DIA.)	.753	1.003	1.253	1.503	1.753	2.003
B (BUSHING DIA.)	1.387	1.717	2.107	2.437	2.747	3.162
C (BUSHING LENGTH)	1 3/4 TO 6"	2" TO 7"	2 1/2 TO 9"	3" TO 12"	3" TO 13"	3" TO 14"
D (1/4 INCREMENT RETAINER LENGTH)	1 1/2" TO 2"	1 1/2 TO 2 1/4	2" TO 3"	2 1/2 TO 3 1/2	2 3/4 TO 4"	3 1/4 TO 4 1/4
M (PIN LENGTH)	3" TO 6"	3 3/4 TO 9"	4 1/2 TO 12"	4 1/2 TO 14"	5" TO 17"	5 1/2 TO 18"

NOTES:
 Specifications shown are for D-M-E precision grade.
 Due to the larger O.D. of the bushing counterbore required, ball bushings cannot be installed in standard leader pin locations in the mold base assembly.

General Dimensions for Thomson Lineal Type Ball Bushings

BUSHING IT	A-122026	A-162536	A-203242	A-243848	A-324864
A (PIN DIA.)	.750	1.000	1.250	1.500	2.000
B (BUSHING DIA.)	1.250	1.5625	2.000	2.375	3.000
C (BUSHING LENGTH)	1.625	2.250	2.625	3.000	4.000
RETAINER RING ITEM NUMBER	W-750	W-1000	W-1250	W-1500	W-2000
D	1.062	1.625	1.875	2.250	3.000
E	1.620	2.040	2.500	2.910	3.600
COUNTERBORE DIA. (FOR RETAINER RING)	1.69	2.10	2.55	3.01	3.69

NOTES:
 Specifications shown are for Thomson precision series A.
 Two rings are required for each bushing.
 Due to the larger O.D. of the bushing counterbore required, ball bushings usually cannot be installed in standard leader pin locations in the mold base assembly.

THIS IS A SPECIAL ORDER ITEM ONLY.